

A1

Jolly Giant Commons

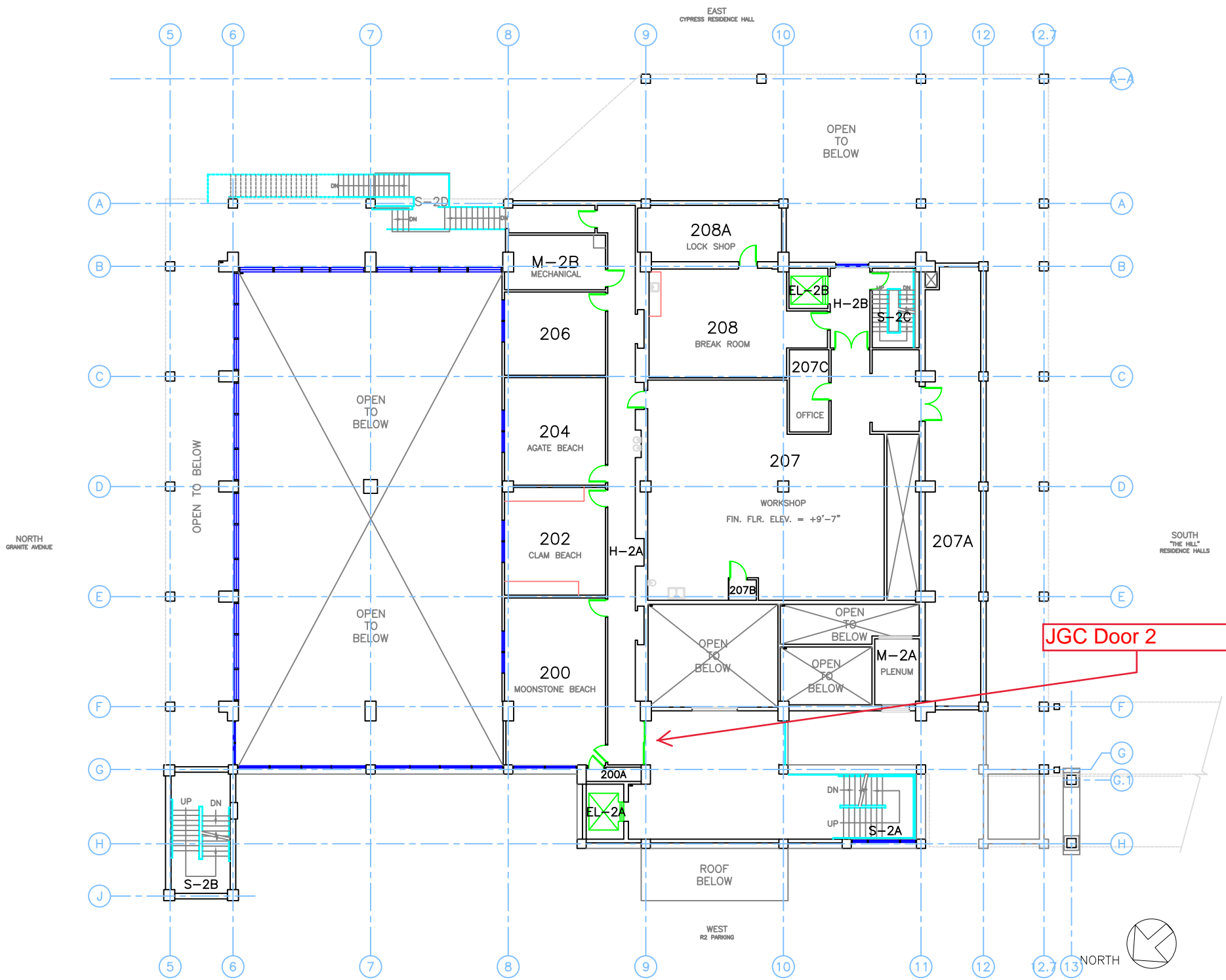
FIRST FLOOR

NOT TO SCALE
DIGITAL PLOT

CAMPUS: 30
 CODE:
 ASSET: 062

PUBLISHED BY:
 Administration
 03/02/2020

Humboldt FacilitiesLink
<https://humboldt.digicality.com/>



Humboldt FacilitiesLink
<https://humboldt.digitality.com/>

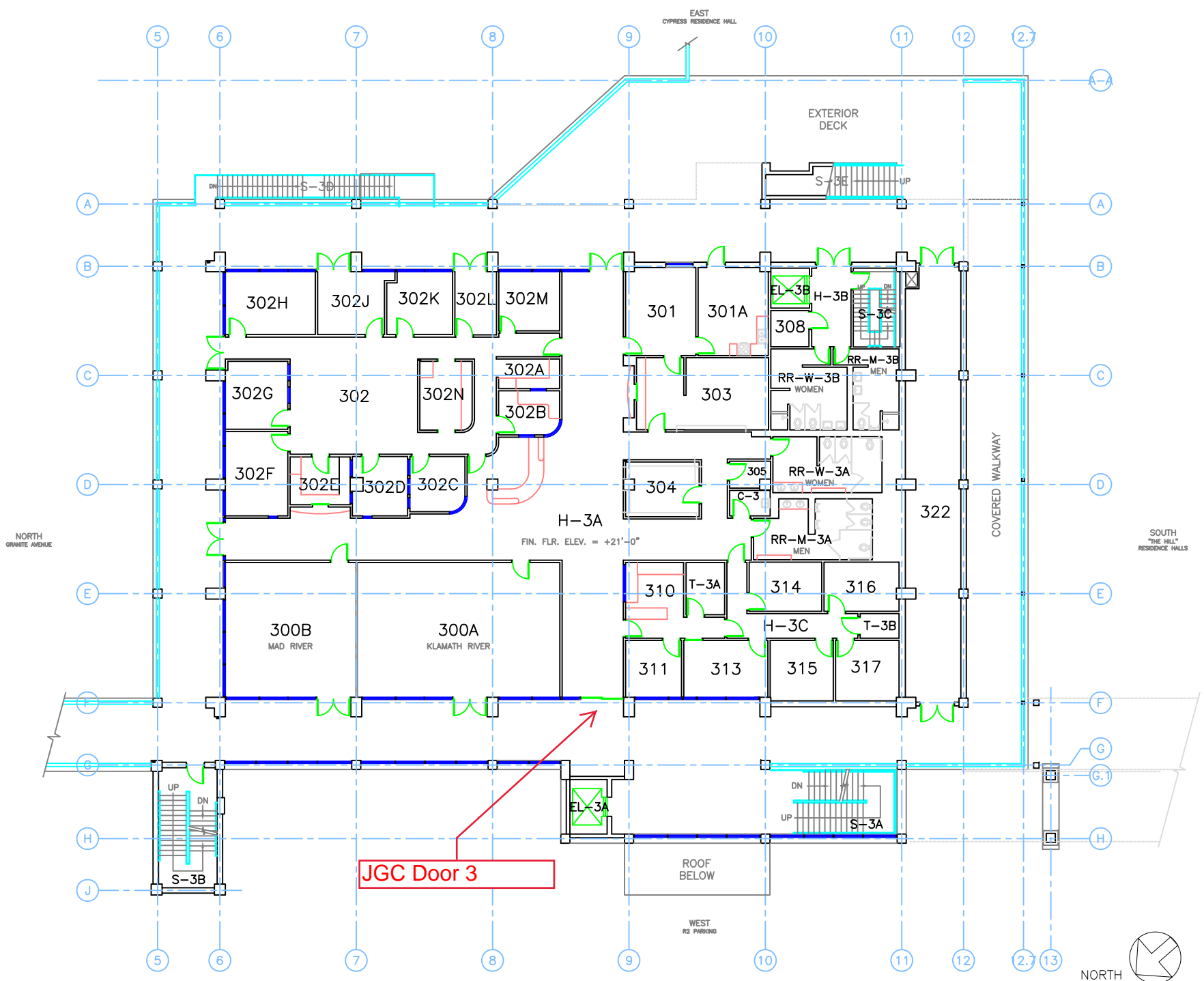
PUBLISHED BY:
 Administration
 03/02/2020

CAMPUS: 30
 CODE:
 ASSET: 062

NOT TO SCALE
 DIGITAL PLOT

Jolly Giant Commons
 SECOND FLOOR (MEZZANINE)

A2



Humboldt FacilitiesLink
<https://humboldt.digitality.com/>

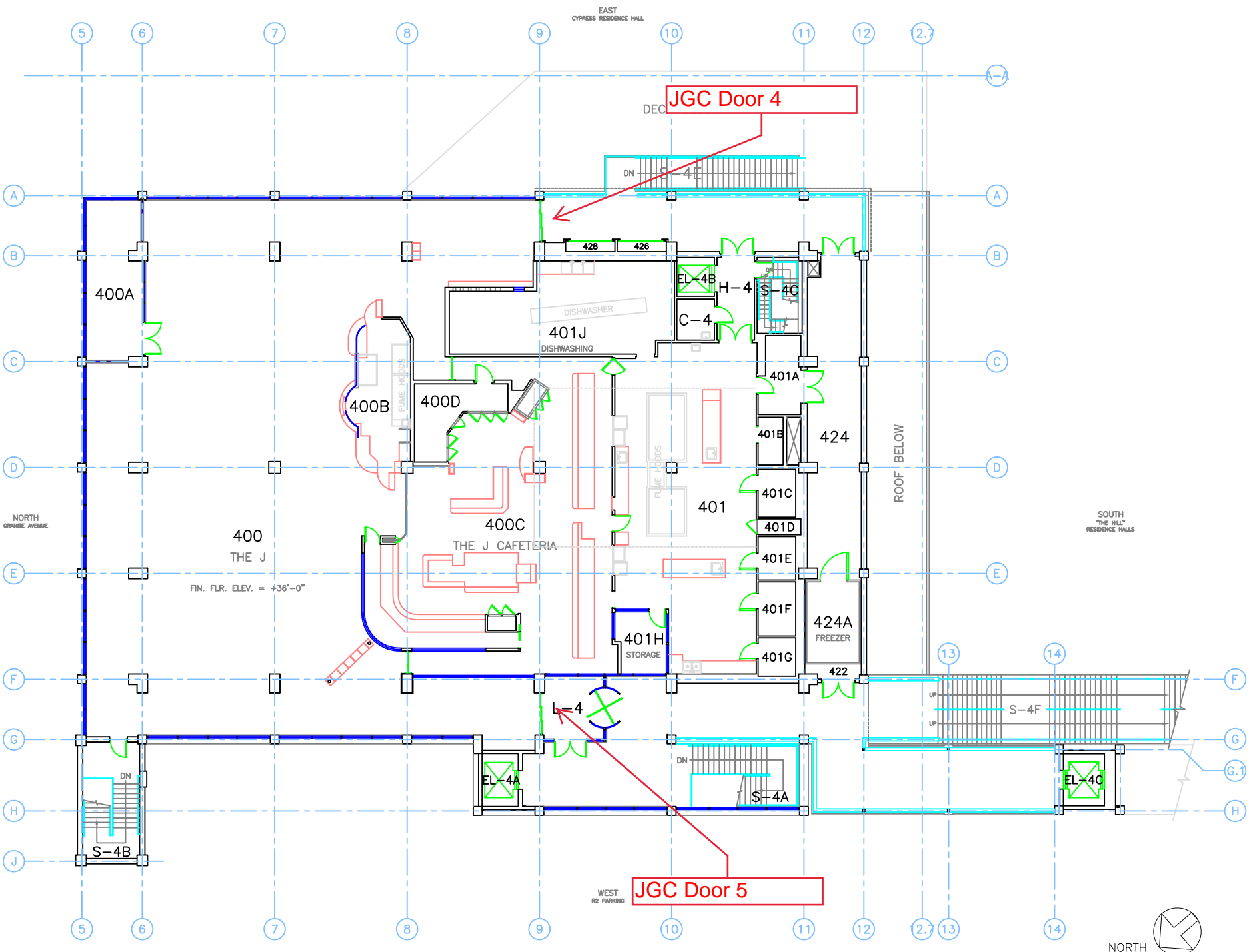
PUBLISHED BY:
 Administration
 03/02/2020

CAMPUS: 30
 CODE:
 ASSET: 062

NOT TO SCALE
 DIGITAL PLOT

Jolly Giant Commons
 THIRD FLOOR

A3



Humboldt FacilitiesLink
<https://humboldt.digitality.com/>

PUBLISHED BY:
 Administration
 03/02/2020

CAMPUS: 30
 CODE:
 ASSET: 062

NOT TO SCALE
 DIGITAL PLOT

Jolly Giant Commons
 FOURTH FLOOR

A4

8' Wide

7'6" tall

AUTOMATIC DOOR - STAND CLEAR

AUTOMATIC DOOR - STAND CLEAR

Single operable sliding panel with break away panel

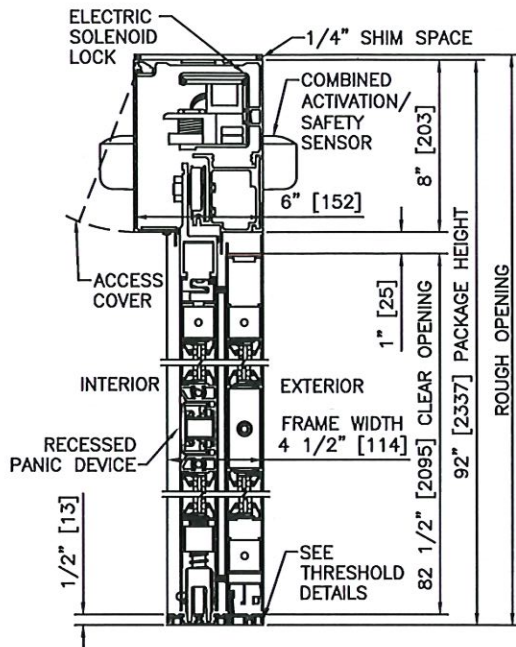
AUTOMATIC CAUTION DOOR



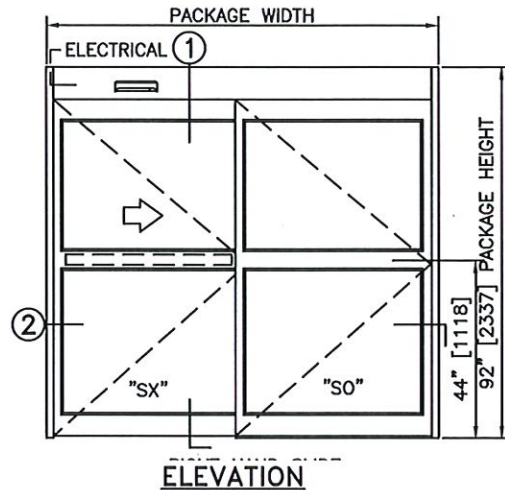


DURA-GLIDE 3000 SERIES

SINGLE SLIDE RIGHT HAND WITH ACCESS CONTROL, RECESSED	
PROJECT INFORMATION	
PROJECT NAME: Humboldt State University Door Replacement	
LOCATION: Arcata, CA	
DOOR NUMBER(S): Door #1	
DATE: 3/17/21	SHEET: 1 OF 1



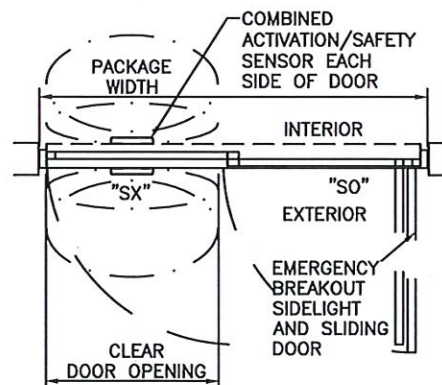
① VERTICAL SECTION



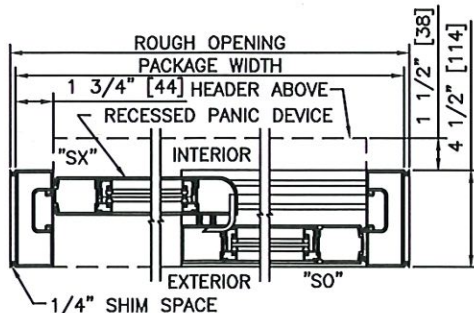
ELEVATION

NOTES

1. ELECTRICAL REQUIREMENTS: BY ELECTRICAL CONTRACTOR
120 VAC, 5 AMP MIN TO POWER OPERATOR
CONTROL CIRCUIT FROM SECURE ACTIVATION TO OPERATOR
2. ROUGH OPENING SHALL PROVIDE 1/4" [6] SHIM SPACE ON SIDES AND TOP OF PACKAGE.
3. LIMITS OF ACTIVATION AND SAFETY ZONES ARE FOR REFERENCE ONLY; SEE ANSI/BHMA A156.10 FOR DETAILED REQUIREMENTS.
4. SEE SPECIFICATIONS FOR ADDITIONAL INFORMATION.



PLAN



② HORIZONTAL SECTION

TYPICAL PACKAGE DIMENSIONS (NARROW STILE)			
PACKAGE WIDTH	NOMINAL CLEAR DOOR OPENING	DOOR PANEL NOMINAL WIDTH	EMERGENCY BREAKOUT NOM. WIDTH
84"	35.3"	41.5"	75.0"
96"	41.3"	47.5"	87.0"
108"	47.3"	53.5"	99.0"

JGC Door #2



8' Wide

7'6" Tall

Single operable sliding door with breakaway

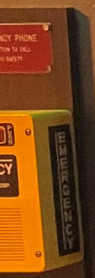
AUTOMATIC DOOR STAND CLEAR


AUTOMATIC DOOR STAND CLEAR

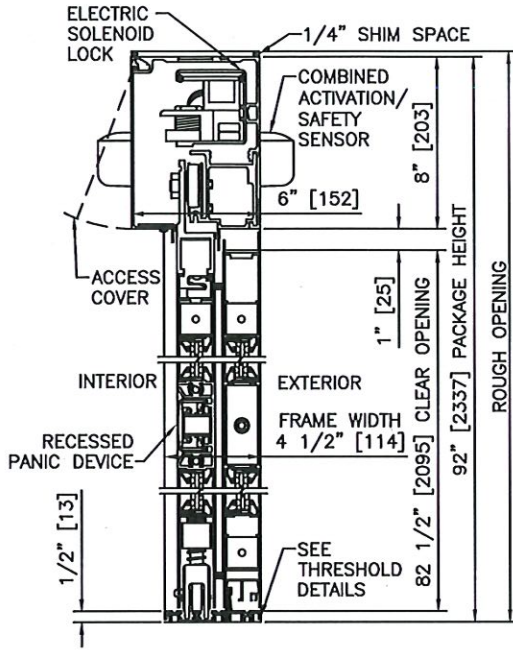
203
MOONSTONE
BEACH
RESORT

AUTOMATIC
CAUTION
DOOR

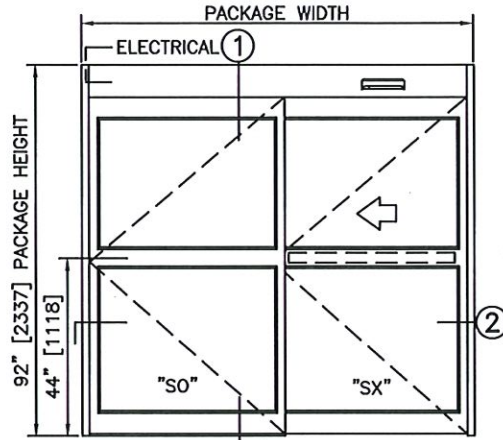
NO SMOKING
IS PERMITTED IN
PROHIBITED AREA
ONLY



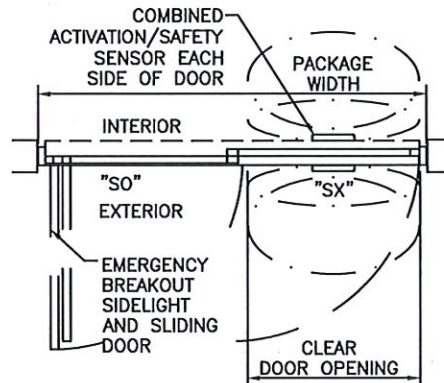
	<h2 style="margin: 0;">DURA-GLIDE 3000 SERIES</h2>	SINGLE SLIDE LEFT HAND WITH ACCESS CONTROL, RECESSED	
	PROJECT INFORMATION		
	PROJECT NAME: Humboldt State University Door Replacement		
	LOCATION: Arcata, CA		
	DOOR NUMBER(S): Door #2		
DATE: 3/17/21		SHEET: 1 OF 1	



① VERTICAL SECTION



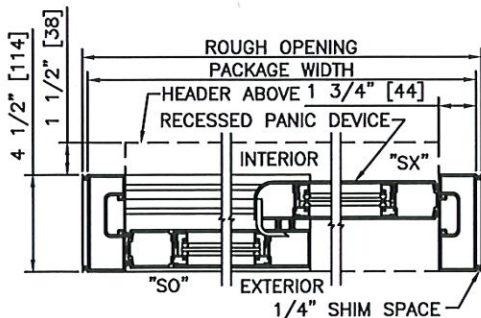
ELEVATION



PLAN

NOTES

1. ELECTRICAL REQUIREMENTS: BY ELECTRICAL CONTRACTOR 120 VAC, 5 AMP MIN TO POWER OPERATOR CONTROL CIRCUIT FROM SECURE ACTIVATION TO OPERATOR
2. ROUGH OPENING SHALL PROVIDE 1/4" [6] SHIM SPACE ON SIDES AND TOP OF PACKAGE.
3. LIMITS OF ACTIVATION AND SAFETY ZONES ARE FOR REFERENCE ONLY; SEE ANSI/BHMA A156.10 FOR DETAILED REQUIREMENTS.
4. SEE SPECIFICATIONS FOR ADDITIONAL INFORMATION.



② HORIZONTAL SECTION

TYPICAL PACKAGE DIMENSIONS (NARROW STILE)			
PACKAGE WIDTH	NOMINAL CLEAR DOOR OPENING	DOOR PANEL NOMINAL WIDTH	EMERGENCY BREAKOUT NOM. WIDTH
84"	35.3"	41.5"	75.0"
96"	41.3"	47.5"	87.0"
108"	47.3"	53.5"	99.0"

JGC Door #3

7'10"
wode

7' Tall

One operable sliding
panel with fixed
breakaway



HUMBOLDT STATE UNIVERSITY
Face Coverings Required
Wellness Self-Check Required
Practice Social Distancing
campusready.humboldt.edu

NEED ASSISTANCE AFTER HOURS?
Call your IGA on duty
1-800-451-4511

AUTOMATIC CAUTION DOOR

Masks required upon entry. Free masks at the desk. Thank you for your cooperation.

BUILDING HOURS
Express Check Out

Express Check Out
Need to check out?

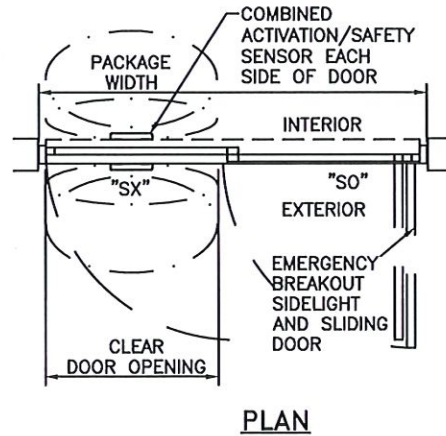
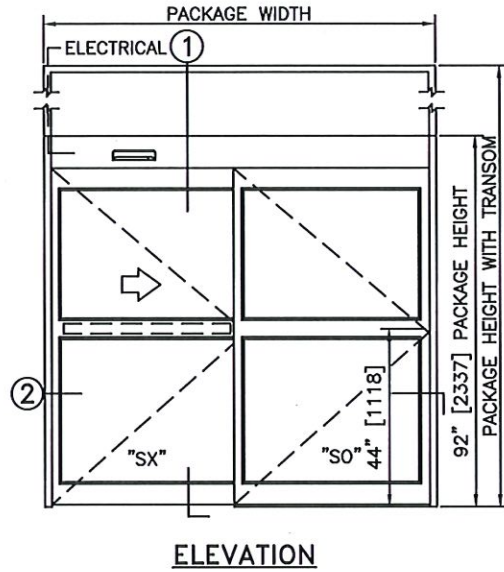
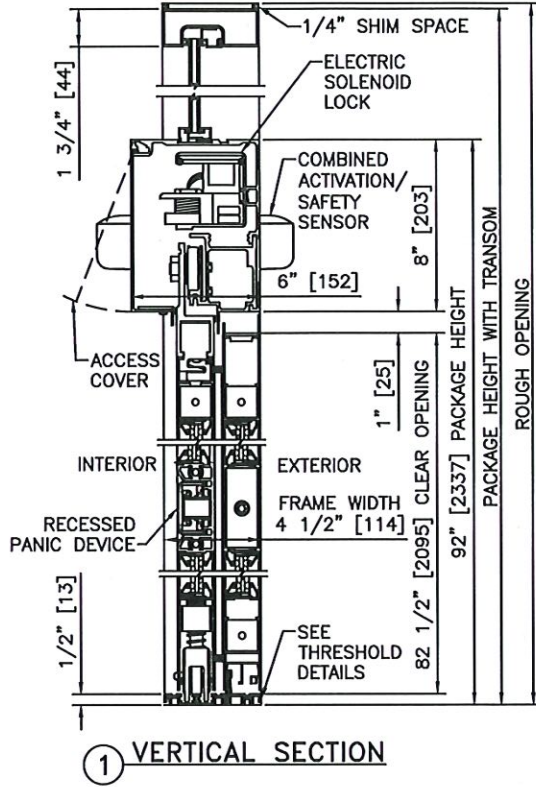
AUTOMATIC DOOR STAND CLEAR

Masks Required Before Entry



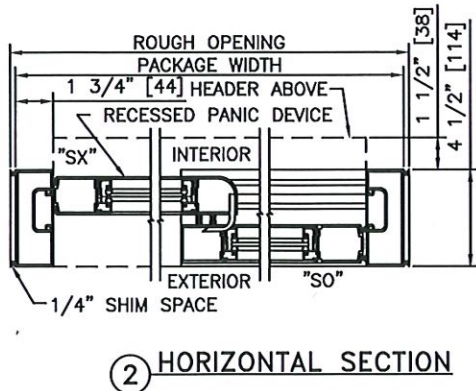
**DURA-GLIDE
3000
SERIES**

SINGLE SLIDE RIGHT HAND WITH TRANSOM & ACCESS CONTROL, RECESSED	
PROJECT INFORMATION	
PROJECT NAME: Humbolt State University Door Replacement	
LOCATION: Arcata, CA	
DOOR NUMBER(S): Door #3	
DATE: 3/17/21	SHEET: 1 OF 1



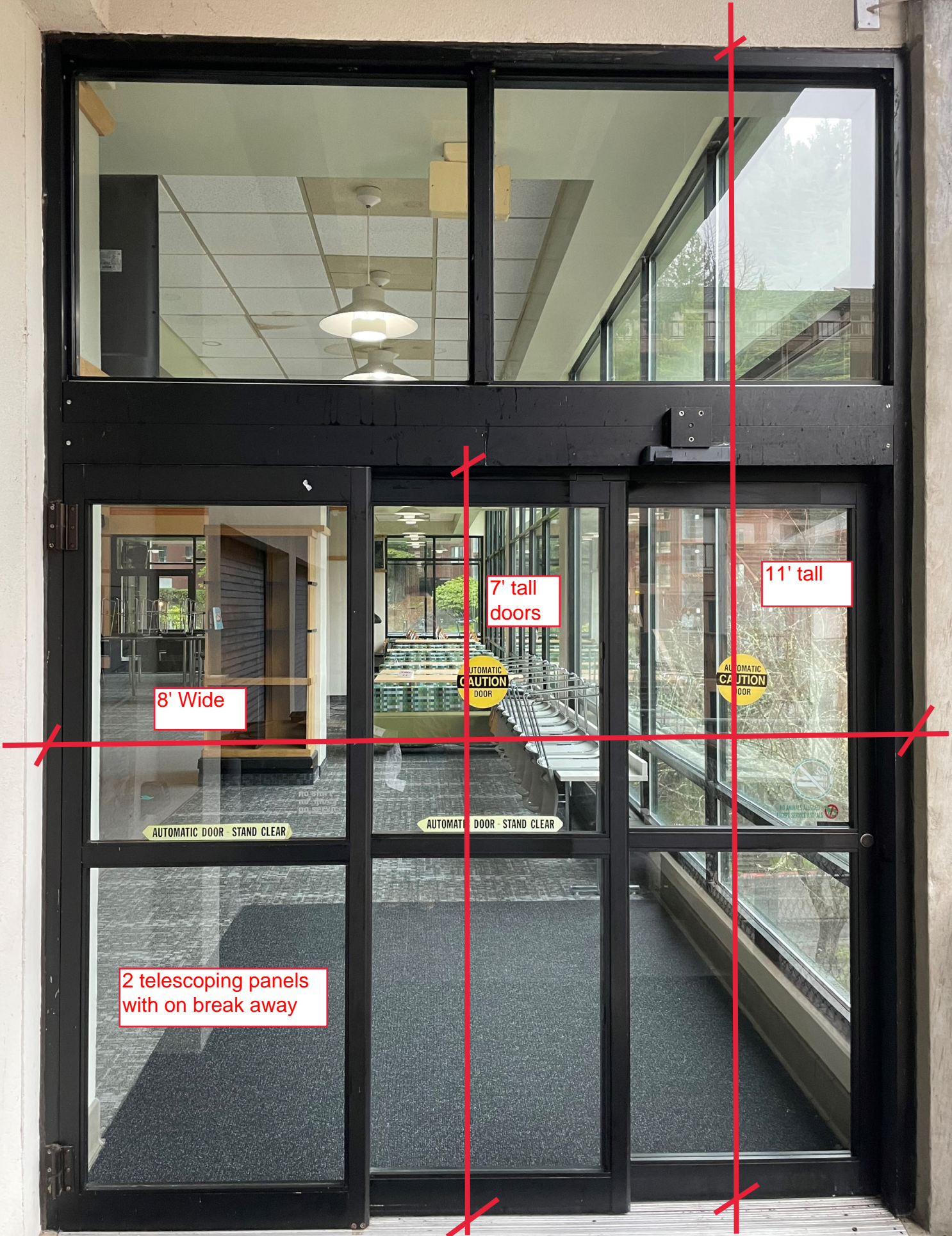
NOTES

1. ELECTRICAL REQUIREMENTS: BY ELECTRICAL CONTRACTOR 120 VAC, 5 AMP MIN TO POWER OPERATOR CONTROL CIRCUIT FROM SECURE ACTIVATION TO OPERATOR
2. ROUGH OPENING SHALL PROVIDE 1/4"[6] SHIM SPACE ON SIDES AND TOP OF PACKAGE.
3. LIMITS OF ACTIVATION AND SAFETY ZONES ARE FOR REFERENCE ONLY; SEE ANSI/BHMA A156.10 FOR DETAILED REQUIREMENTS.
4. SEE SPECIFICATIONS FOR ADDITIONAL INFORMATION.



TYPICAL PACKAGE DIMENSIONS (NARROW STILE)			
PACKAGE WIDTH	NOMINAL CLEAR DOOR OPENING	DOOR PANEL NOMINAL WIDTH	EMERGENCY BREAKOUT NOM. WIDTH
84"	35.3"	41.5"	75.0"
96"	41.3"	47.5"	87.0"
108"	47.3"	53.5"	99.0"

JGC Door #4



8' Wide

7' tall doors

11' tall

2 telescoping panels with on break away


AUTOMATIC CAUTION DOOR

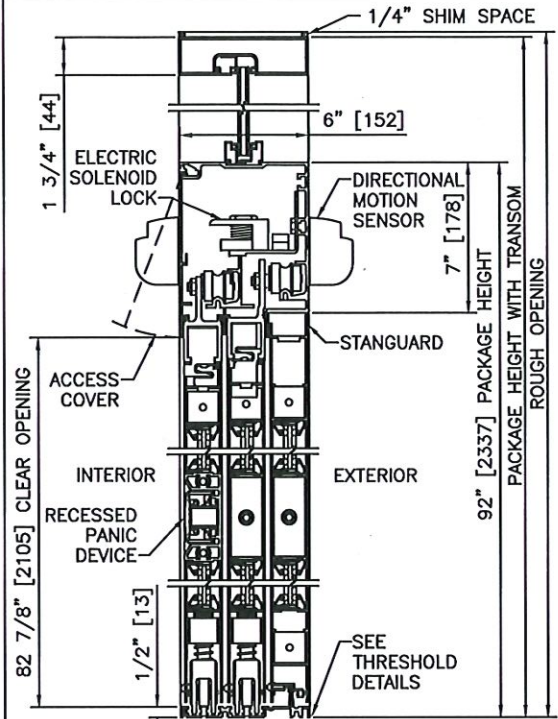
AUTOMATIC CAUTION DOOR

AUTOMATIC DOOR - STAND CLEAR

AUTOMATIC DOOR - STAND CLEAR

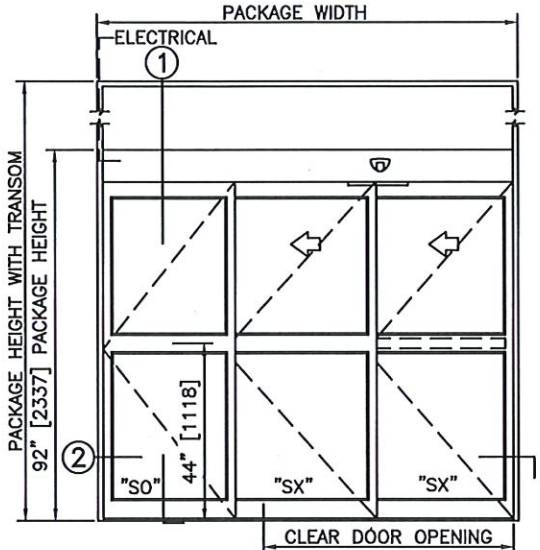
STANT COMMONS
3RD FLOOR

	DURA-GLIDE	3-PANEL TELESCOPIC LEFT HAND WITH TRANSOM & ACCESS CONTROL, RECESSED	
	5300	PROJECT INFORMATION	
	SERIES	PROJECT NAME: Humboldt State University Door Replacement	
		LOCATION: Arcata, CA	
		DOOR NUMBER(S): Door #4	
	DATE: 3/17/21	SHEET: 1 OF 1	

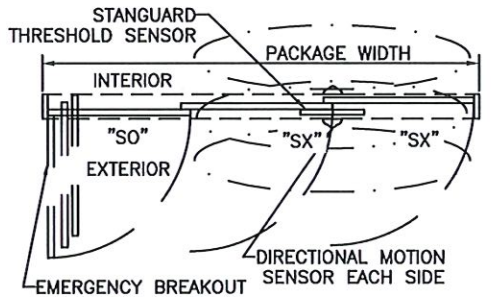


① VERTICAL SECTION

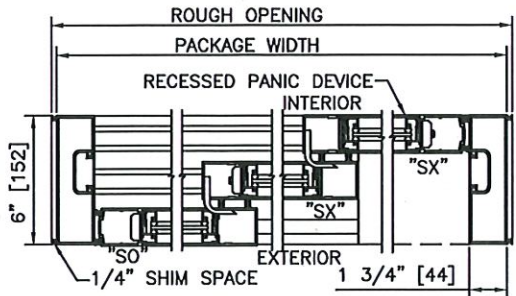
- NOTES**
1. ELECTRICAL REQUIREMENTS: BY ELECTRICAL CONTRACTOR
 - 120 VAC, 5 AMP MIN TO POWER OPERATOR
 - CONTROL CIRCUIT FROM SECURE ACTIVATION TO OPERATOR
 2. ROUGH OPENING SHALL PROVIDE 1/4" [6] SHIM SPACE ON SIDES AND TOP OF PACKAGE.
 3. LIMITS OF ACTIVATION AND SAFETY ZONES ARE FOR REFERENCE ONLY; SEE ANSI/BHMA A156.10 FOR DETAILED REQUIREMENTS.
 4. SEE SPECIFICATIONS FOR ADDITIONAL INFORMATION.



ELEVATION



PLAN

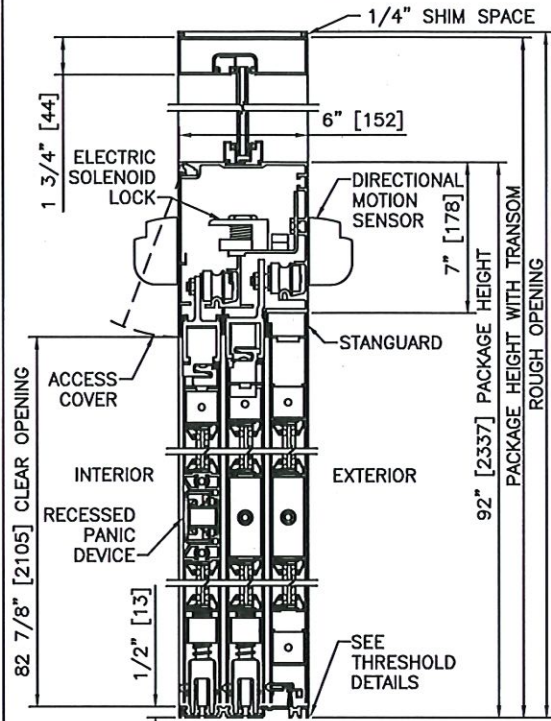


② HORIZONTAL SECTION

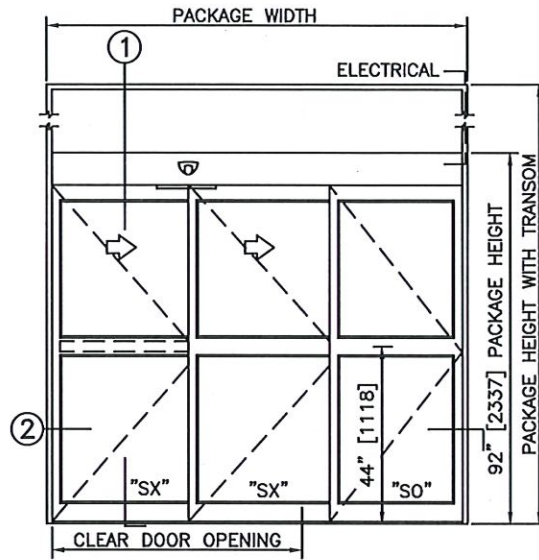
TYPICAL PACKAGE DIMENSIONS (NARROW STILE)			
PACKAGE WIDTH	NOMINAL CLEAR DOOR OPENING	SLIDING DOOR PANEL NOMINAL WIDTH	EMERGENCY BREAKOUT NOM. WIDTH
84"	44.6"	28.4"	74.8"
96"	52.6"	32.4"	86.8"
108"	60.6"	36.4"	98.8"



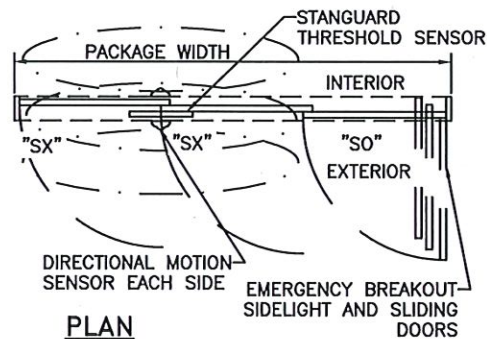
STANLEY Security ACCESS TECHNOLOGIES	DURA-GLIDE 5300 SERIES	3-PANEL TELESCOPIC RIGHT HAND WITH TRANSOM & ACCESS CONTROL, RECESSED	
	PROJECT INFORMATION		
	PROJECT NAME: Humboldt State University Door Replacment		
	LOCATION: Arcata, CA		
	DOOR NUMBER(S): Door #5		
DATE: 3/17/21		SHEET: 1 OF 1	



1 VERTICAL SECTION



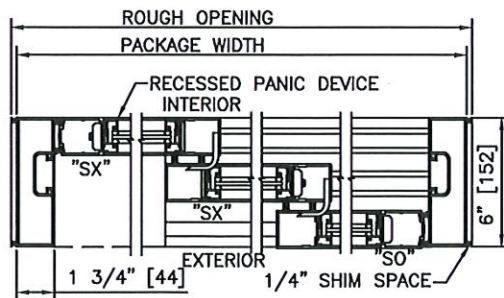
ELEVATION



PLAN

NOTES

1. ELECTRICAL REQUIREMENTS: BY ELECTRICAL CONTRACTOR
 - 120 VAC, 5 AMP MIN TO POWER OPERATOR
 - CONTROL CIRCUIT FROM SECURE ACTIVATION TO OPERATOR
2. ROUGH OPENING SHALL PROVIDE 1/4"[6] SHIM SPACE ON SIDES AND TOP OF PACKAGE.
3. LIMITS OF ACTIVATION AND SAFETY ZONES ARE FOR REFERENCE ONLY; SEE ANSI/BHMA A156.10 FOR DETAILED REQUIREMENTS.
4. SEE SPECIFICATIONS FOR ADDITIONAL INFORMATION.



2 HORIZONTAL SECTION

TYPICAL PACKAGE DIMENSIONS (NARROW STILE)			
PACKAGE WIDTH	NOMINAL CLEAR DOOR OPENING	SLIDING DOOR PANEL NOMINAL WIDTH	EMERGENCY BREAKOUT NOM. WIDTH
84"	44.6"	28.4"	74.8"
96"	52.6"	32.4"	86.8"
108"	60.6"	36.4"	98.8"