

# Craftsman Student Housing RFQ Attachment 1



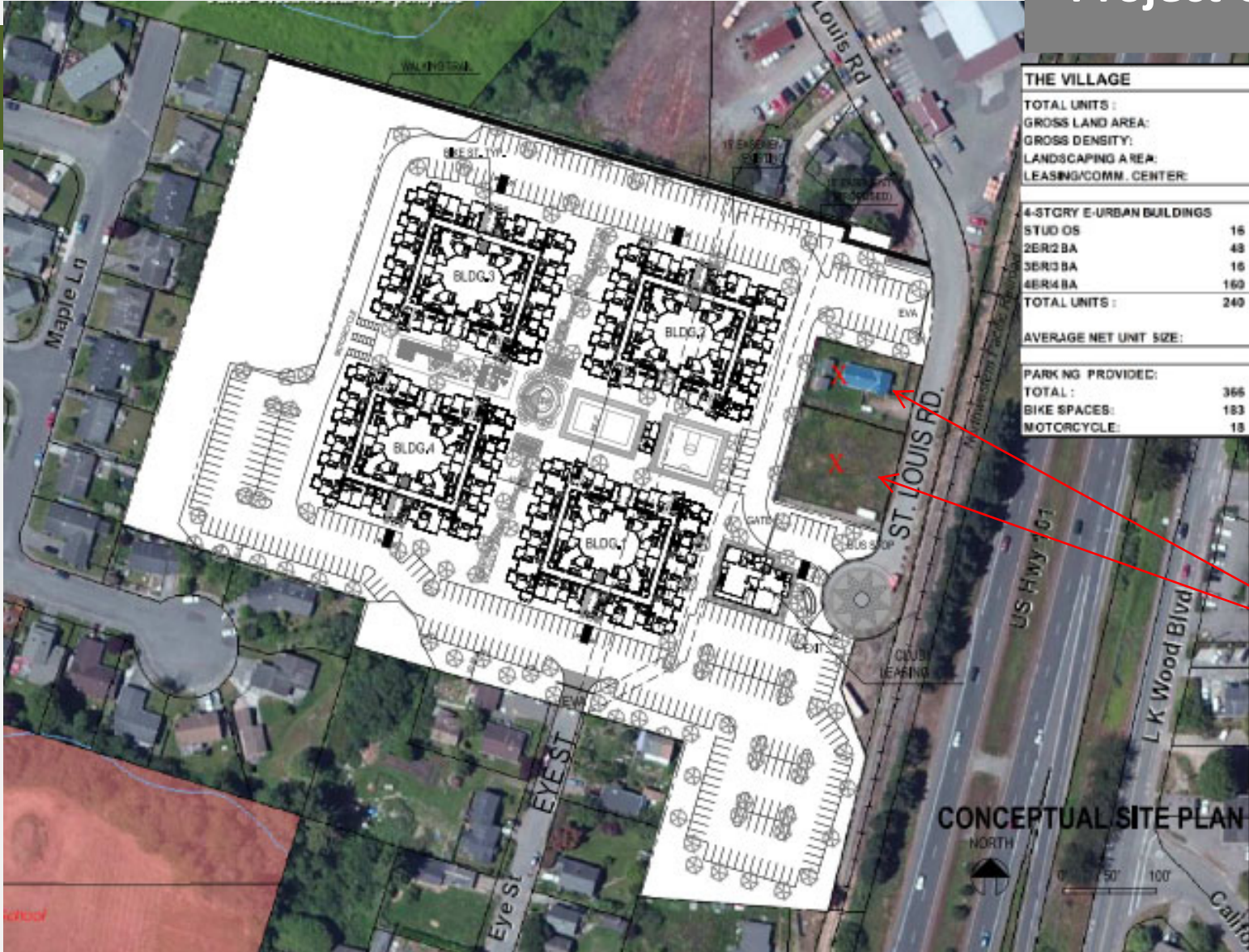
## Project Concept 1

800 Students - 366 parking  
4-story buildings





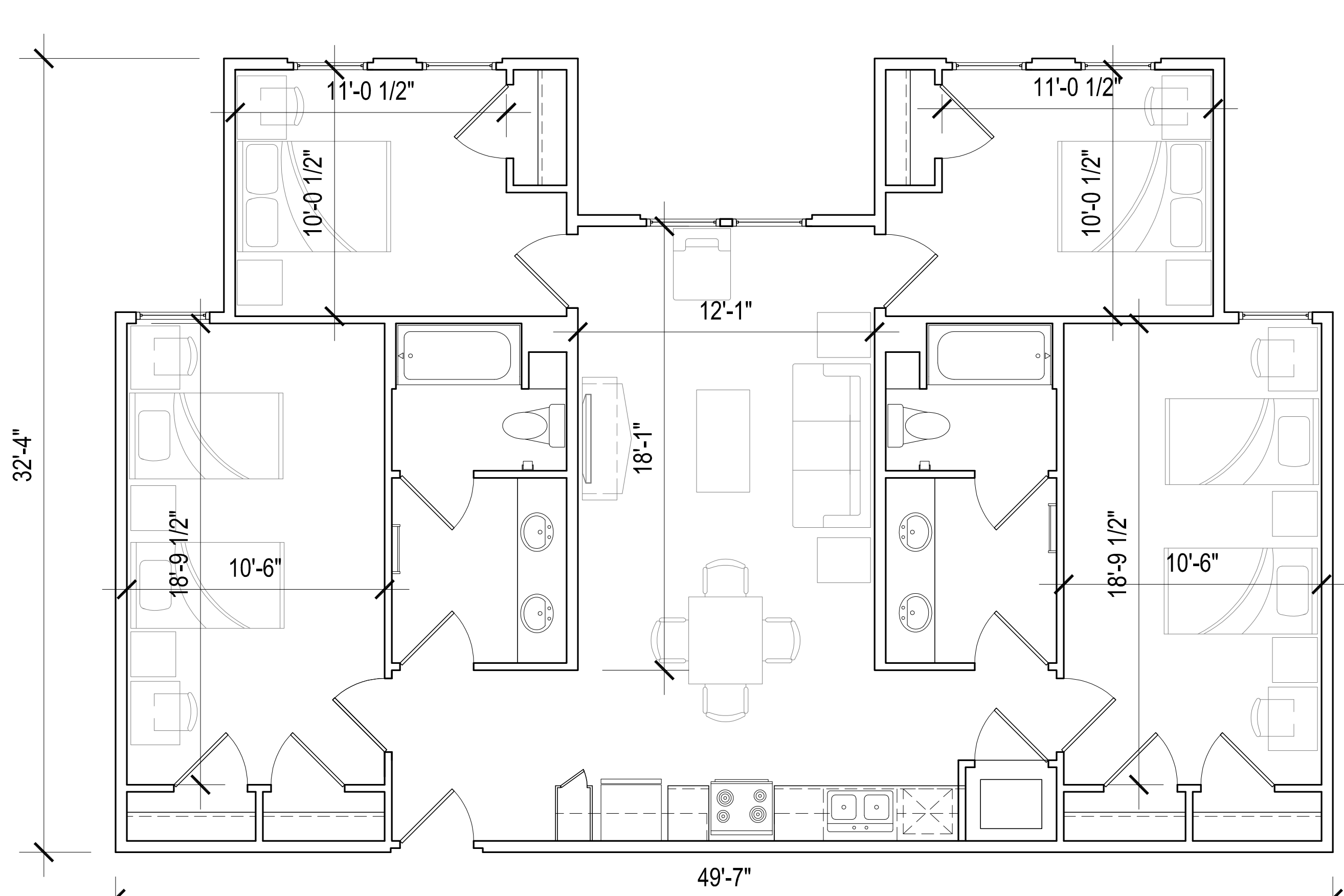
# Project Concept 2



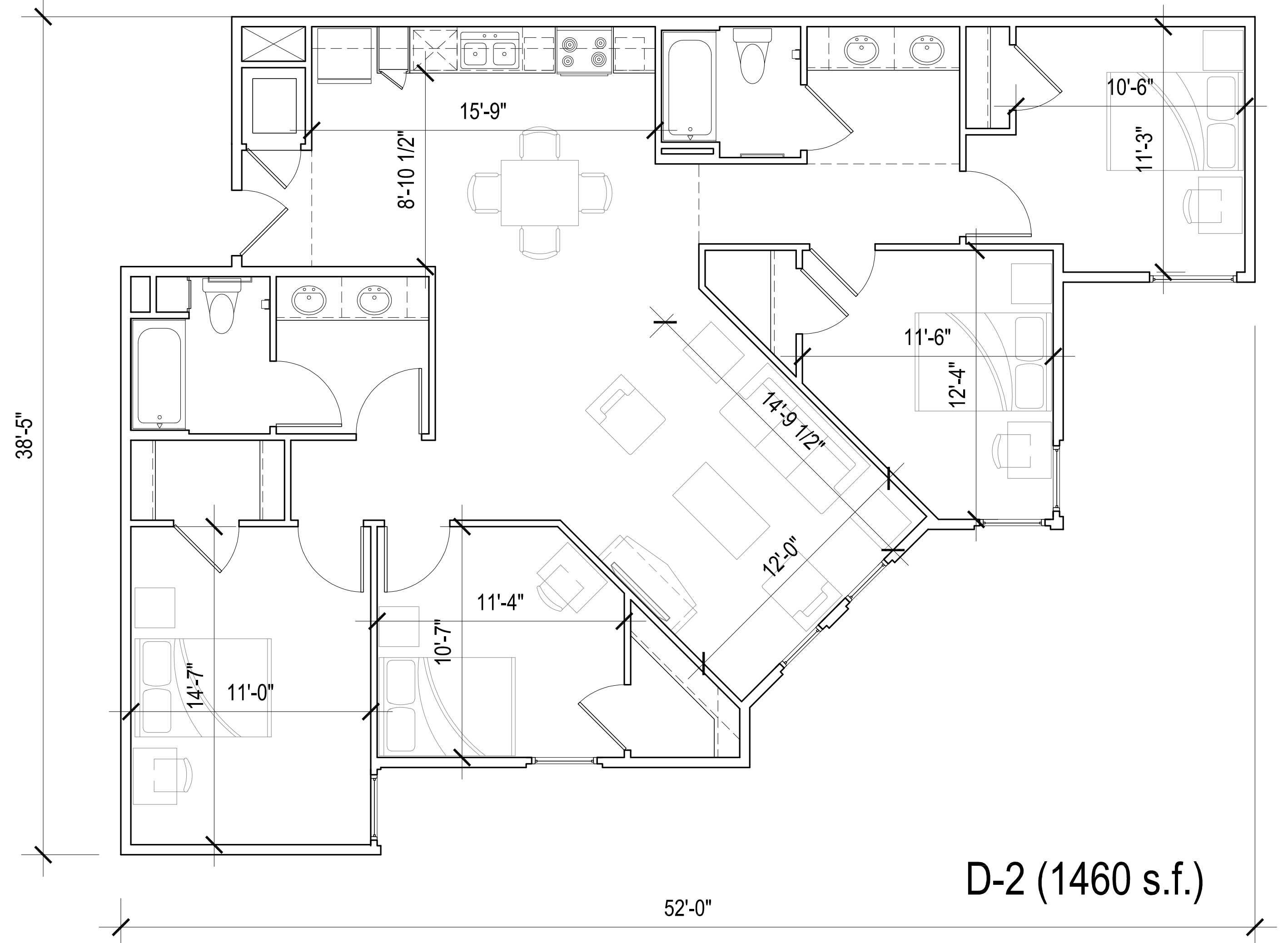
THE VILLAGE			
TOTAL UNITS :	240	800 BEDS	
GROSS LAND AREA:	10.2		
GROSS DENSITY:	24		
LANDSCAPING AREA:	2.07 ACRES	20% OF TOTAL	
LEASING/COMM. CENTER:	7,500		
4-STORY E-URBAN BUILDINGS			
STUDIOS	16	7%	
2BR/2BA	48	20%	
3BR/3BA	16	7%	
4BR/4BA	160	67%	
TOTAL UNITS :	240	100%	
AVERAGE NET UNIT SIZE:			
	1,245	S.F.	
PARKING PROVIDED:			
TOTAL :	366	0.46 PER BED	
BIKE SPACES:	183	50% OF PARKING	
MOTORCYCLE:	18	1 PER 20 PARKING SPACE	

These parcels are within project scope

THE VILLAGE

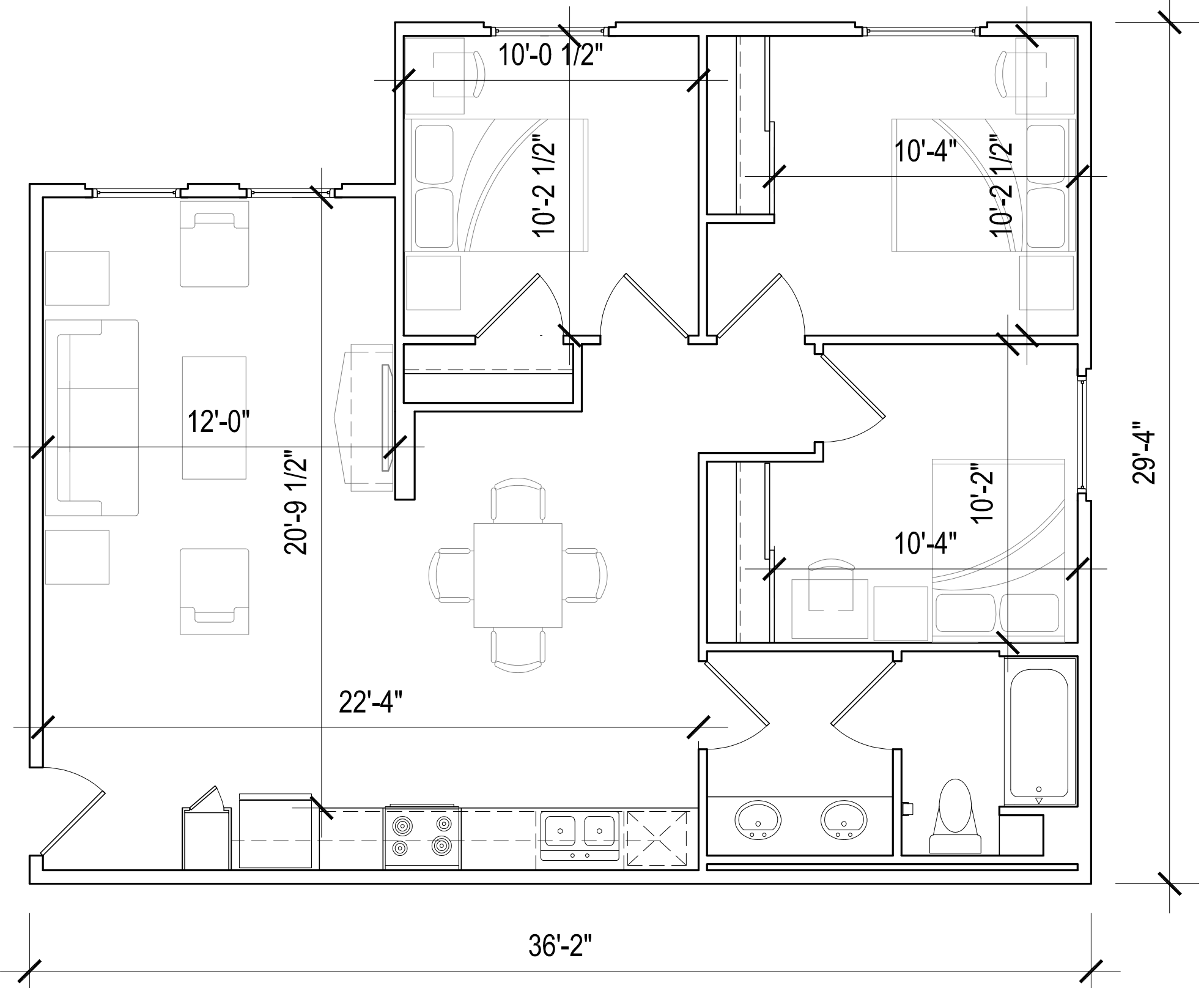


D-1 (1435 s.f.)

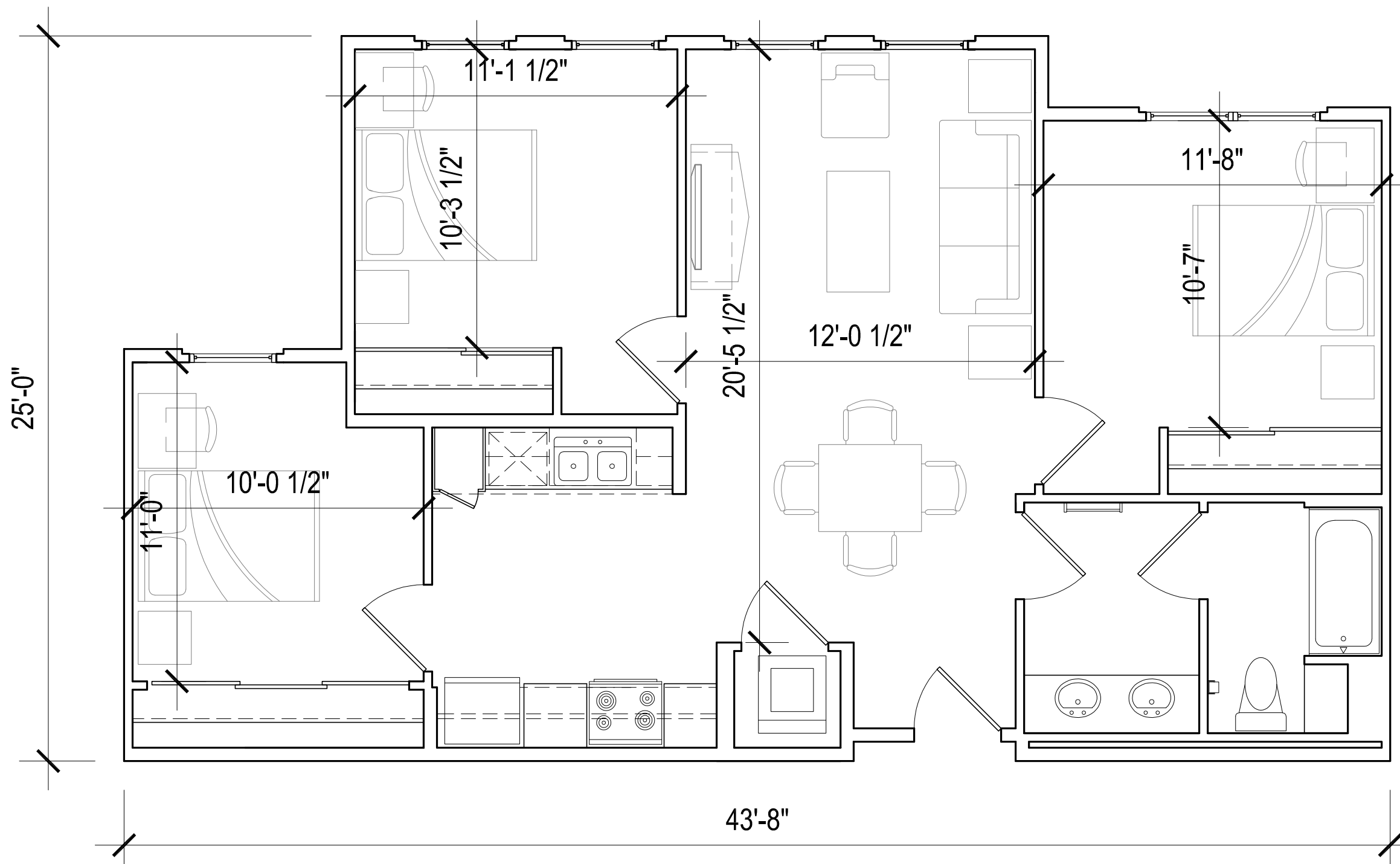


D-2 (1460 s.f.)

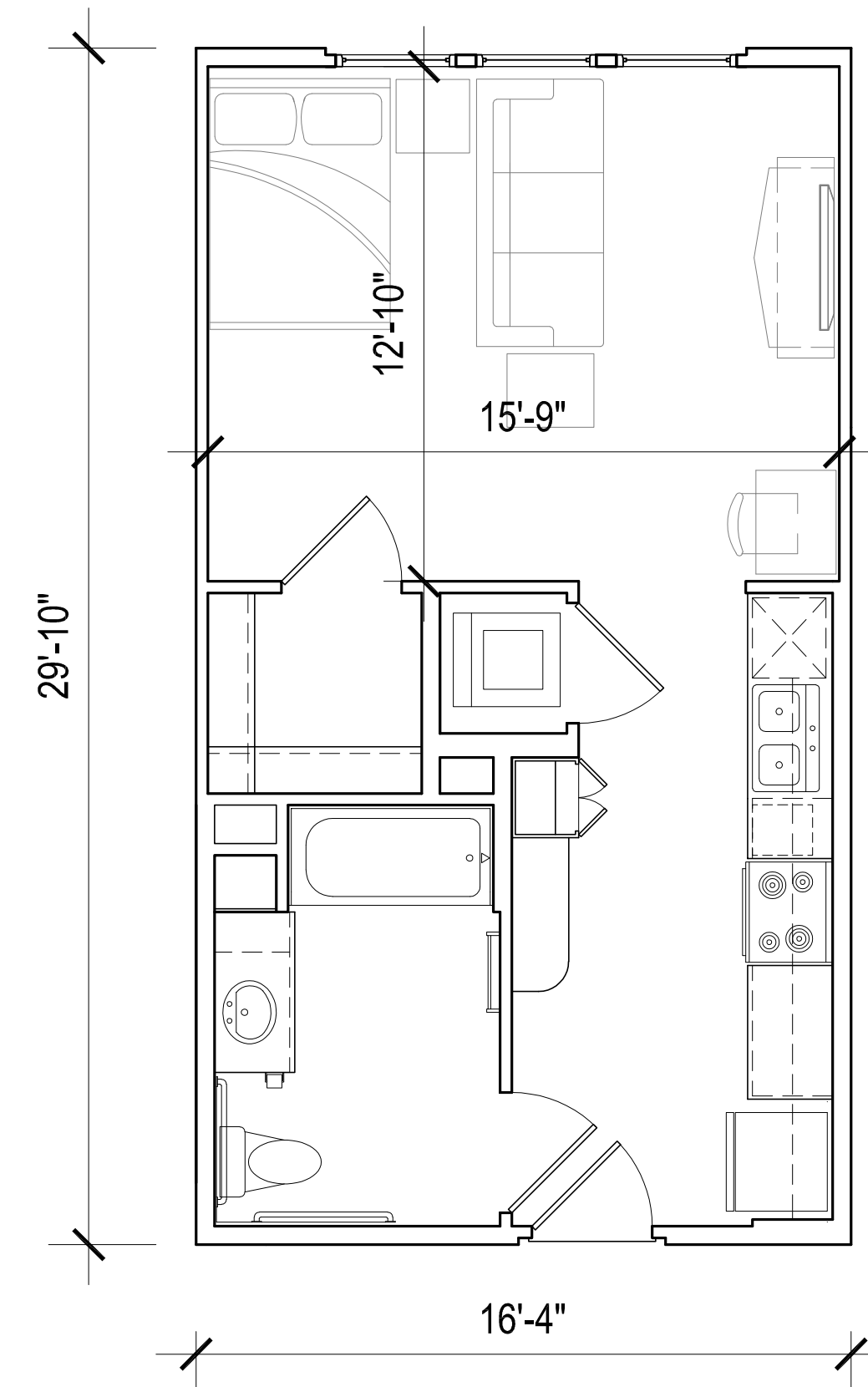
**Project Unit Concepts**



C-2 (992 s.f.)



C-1 (978 s.f.)



S-1 (487 s.f.)



# Project Location

Project Site





# Project Location





# Project Location

## Parcel Map



Maple Ln

St. Louis Rd

2018 6/20

Earth Church International

101

Google

Map data ©2020 Imagery ©2020, Maxar Technologies, USDA Farm Service Agency

20 m

Terms of Use

Report a map error