

HUMBOLDT STATE UNIVERSITY

February 23, 2022

To All Prospective Bidders

SUBJECT: IFB #PW21-3, Sunset Roof Replacement, Project #XHS237

Addendum #2

The following changes, omissions and/or additions to the Bidding Documents shall apply to proposals made for and to the execution of the various parts of the work affected thereby and all other conditions shall remain the same. In case of conflict between Bidding Documents and this Addendum, this Addendum shall govern.

1. Bid Opening Date- Corrected bid date

Bid Due Date has not changed and remains Friday, March 18, 2022 at 3:00 p.m.

2. Exhibit I, Sunset Roof Conformed Drawings, Drawing AS2.2

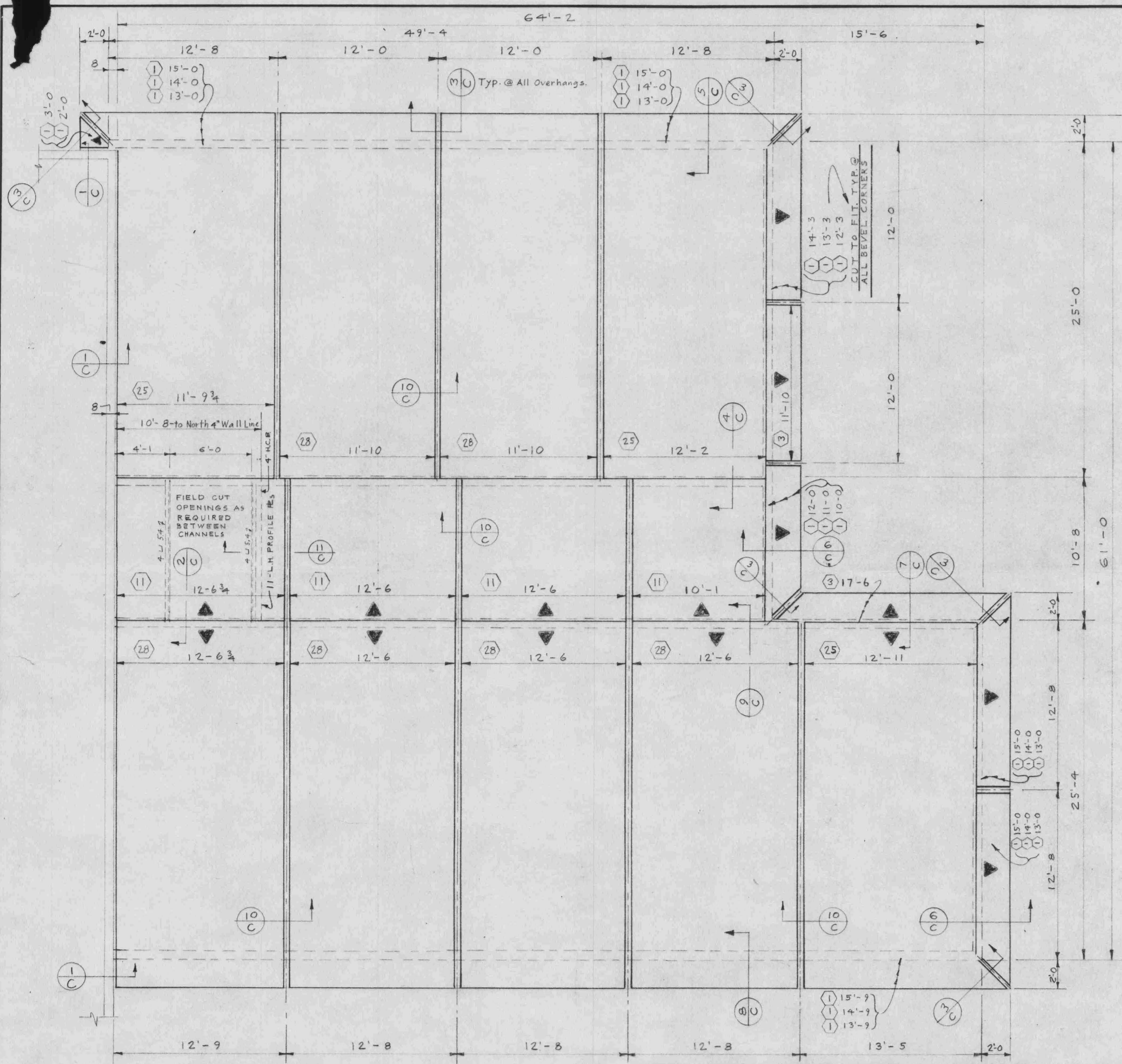
Question: Drawing AS2.2 shows a steel decking on the lower roof. What are the specifications of the steel decking (type, width and gauge). Is there partial concrete decking?

Answer: Please see the attached print sheet.

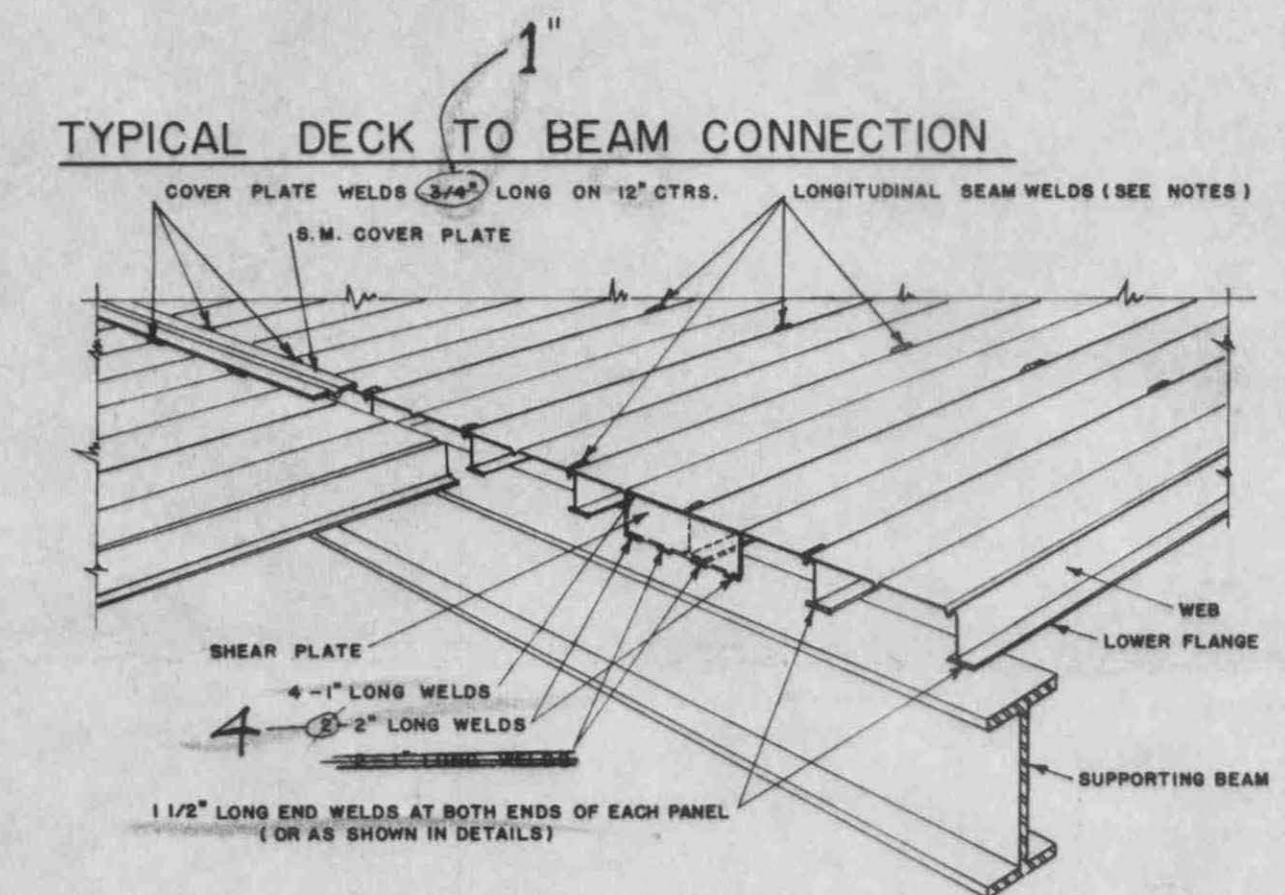
-END OF ADDENDUM-

Contracts & Procurement

Addie Dunaway
Procurement Specialist



NOTE: Field Cut Openings For Roof Drains.



ERECTION & WELDING NOTES

- ALL ERECTION, UNLOADING, FIELD HAULING, FIELD CUTTING, HANDLING OF MATERIAL AT JOB SITE, OR FIELD LABOR OF ANY KIND NOT BY T STEEL CORPORATION.
- PANELS SHALL BE ADJUSTED IN PLACE AND PROPERLY ALIGNED BEFORE WELDING. EACH PANEL SHALL BE PLACED WITH WEBS IN A TRUE VERTICAL POSITION BEFORE WELDING. TO INSURE KEEPING THE WEBS VERTICAL AND LOWER FLANGES STRAIGHT, END WELDS SHALL BE MADE PRIOR TO PLACING NEXT ROOF DECK PANEL.
- LONGITUDINAL SEAM WELDS TO BE SPACED 3'-0" ON CENTER OR LESS WITH EFFECTIVE LENGTH OF 1'-0". COVER PLATE WELDS TO BE 3'-0" LONG AND SPACED 12" ON CENTER. EACH PANEL TO BE FASTENED TO BEAM OR SUPPORTING MEMBER BY MEANS OF ONE END WELD 1/2" LONG AT BOTH ENDS OF THE PANEL. SPECIAL WELDING, WHEN REQUIRED, AS SHOWN IN DETAILS.
- SHEAR PLATES TO BE SPACED 6" ON CENTER (OR AS NOTED) ALONG SUPPORTING BEAM OR WALL. SEE ABOVE DIAGRAM FOR WELDING. INSTALL SHEAR PLATES SINGLY (NOT IN PAIRS). ERECTOR SHALL AVOID BURNING THROUGH BASE METAL WHEN WELDING.
- PANELS REQUIRE 1/2" MINIMUM BEARING AT SUPPORTS ON SPANS UP TO 13'-0".
- PANEL ERECTOR SHALL COORDINATE HIS WORK WITH OTHER TRADES REQUIRING ACCESS TO, AROUND OR THROUGH THE ROOF DECK. WHERE PLANS CALL FOR CONGEALED WIRING THE DECK ERECTOR OR SHALL NOT INSTALL THE SHEET METAL COVER PLATES UNTIL ELECTRICAL CONTRACTOR HAS INSTALLED CONDUIT RUNS.
- HOLES AND OTHER OPENINGS NOT BY T STEEL CORPORATION UNLESS NOTED. SECONDARY FRAMING FOR PANELS AROUND ALL OPENINGS FOR SKYLIGHTS, CHIMNEYS, VENTILATORS, HATCHES, STACKS, LARGE PIPES, ETC. ARE NOT A PART OF THE STEEL ROOF DECK CONTRACT AND WHERE FOUND LACKING MUST BE FURNISHED AND INSTALLED BY OTHERS.
- ERECTOR TO TOUCH UP ALL WELDS FROM ABOVE ONLY USING PAINT AS SUPPLIED BY T STEEL CORR WELD BURNS FROM BELOW SHOULD BE TOUCHED UP BY PAINTING CONTRACTOR.

GENERAL NOTES

- ALL ROOF DECK PANELS TO BE AT-18 EXCEPT AS NOTED ON DRAWINGS.
- DESIGN LIVE LOAD IS 20 LBS./SQ. FT. DEFLECTION DUE TO THIS LIVE LOAD WILL NOT EXCEED 1/840 TH OF THE SPAN.
- ROOF DECK PANELS ARE DESIGNED IN ACCORDANCE WITH THE AMERICAN IRON AND STEEL INSTITUTE'S "SPECIFICATION FOR THE DESIGN OF LIGHT GAUGE STRUCTURAL MEMBERS".
- NOMENCLATURE OF THE PANELS DESCRIBE THE PHYSICAL CHARACTERISTICS OF THE T STEEL SECTION. EXAMPLE: 5T-18 INDICATES THAT THE PANEL HAS A DEPTH OF 5" AND IS FORMED FROM 18 GA. MATERIAL.
- ALL ROOF DECK PANELS TO HAVE STANDARD GALVANIZED FINISH CONFORMING TO OR EXCEEDING U.S. GOVERNMENT SPECIFICATION NUMBER QQ-1-718-D1 OR E1.

ABBREVIATIONS & SYMBOLS

	DETAIL NUMBER	S.M.	SHEET METAL ITEM
	SHEET WHERE DETAIL IS SHOWN	S.M.C.	SHEET METAL STARTING CHANNEL
	STARTING POINT OF PANEL RUN	T.S.CO.	T STEEL CORPORATION
	NUMBER OF PANELS IN RUN	S.M.L.	SHEET METAL ANGLE
	LENGTH OF FABRICATED PANEL	F.C.P.	FIELD CUT PANEL

PROJECT NOTES

OWNER: STATE OF CALIFORNIA
 ARCHITECT: DIVISION OF ARCHITECTURE
 ENGINEER: DO:
 CONTRACTOR: MACDONALD, YOUNG & NELSON, INC.

ROOF DECK PLAN
 LOUNGE & RECREATION ROOM AREA
 UNIT "A"

<p>STEEL ROOF DECK</p> <p>J # 5 # 1677 PATENTS PENDING</p>	DRAWN BY: G.K.L. DATE: 6-25-58 CH'KD BY: J.C.T. REVISED:	RESIDENCE HALLS UNIT "A" HUMBOLT STATE COLLEGE ARCATA CALIFORNIA	DRAWING NUMBER SF-17-A
	T STEEL CORPORATION SEATTLE • LOS ANGELES		