



FACILITIES MANAGEMENT
1 HARPST STREET
ARCATA, CA 95521
707 826-3646



SRC WEST ATHLETIC TRAINING ROOM
RECREATION & WELLNESS CENTER WEST GYM 201
RECREATION & WELLNESS CENTER (BLDG 024D)

STATUS
100% CONSTRUCTION DOCUMENTS

BUILDING PERMIT APPROVAL:
This project has demonstrated compliance with applicable codes and standards established by state and university policy. Review and determination of these documents are APPROVED FOR CONSTRUCTION.

DATE: JANUARY 6, 2023
PERMIT #: 2022/23-008

CALIFORNIA STATE FIRE MARSHAL APPROVED:
Approval of this plan does not authorize or approve any extension or deviation from applicable regulations. Final approval is subject to final inspection. Only set approved plans shall be available on the project site at all times.

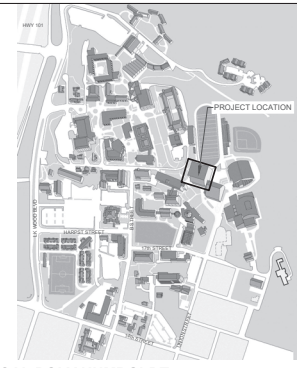
REVIEWED BY: NA

PROJECT #: XPL290
W.O. #:
DRAWN BY: HFM

ISSUE DATE: JAN. 6, 2023
REV:

SHEET TITLE
TITLE SHEET, DATA & SCOPE OF WORK

SHEET
A0.1
1 of 3 sheets



CAL POLY HUMBOLDT

APPLICABLE CODES & STANDARDS FOR PROJECT:

- TITLE 8 CCR, INDUSTRIAL RELATIONS**
TITLE 17 CCR, PUBLIC HEALTH
TITLE 19 CCR, PUBLIC SAFETY, STATE FIRE MARSHAL REGULATIONS
2019 CALIFORNIA ADMINISTRATIVE CODE Title 24, Pt 1
2019 CALIFORNIA BUILDING CODE (CBC) Title 24, Pt 2
2019 CALIFORNIA ELECTRICAL CODE (CEC) Title 24, Pt 3
2019 CALIFORNIA MECHANICAL CODE (CMC) Title 24, Pt 4
2019 CALIFORNIA PLUMBING CODE (CPC) Title 24, Pt 5
2019 CALIFORNIA ENERGY CODE CCR Title 24, Pt 6
2019 CALIFORNIA HISTORIC BUILDING CODE (CHBC) Title 24, Pt 8
2019 CALIFORNIA FIRE CODE (CFC) CCR Title 24, Pt 9
2019 CALIFORNIA EXISTING BUILDING CODE Title 24, Pt 10
2019 CALIFORNIA GREEN BUILDING STANDARDS Title 24, Pt 11
2019 CALIFORNIA REFERENCED STANDARDS Title 24, Pt 12

- 2016 NFPA 13, SPRINKLER SYSTEMS (CA amended)**
2016 NFPA 14, STANDPIPE & HOSE (CA amended)
2016 NFPA 20, PUMPS FOR FIRE PROTECTION (CA amended)
2016 NFPA 24, FIRE SERVICE MAINS (CA amended)
2016 NFPA 72, FIRE ALARM CODE (CA amended)

RECREATION & WELLNESS CENTER

CAL POLY HUM BLDG #024D, CSFM #: 18-12-01-0001-00069
OCCUPANCY CLASSIFICATION & USE: A-3 GYMNASIUM

CONSTRUCTION TYPE: TYPE III B (CONC. WALLS)
YEAR CONSTRUCTED, APPROX: 1974
LAST RENOVATION: 2000
NUMBER OF STORES: 2
BUILDING HEIGHT: ± 27 FT

1st FLOOR AREA: 24,213 SF
2ND FLOOR AREA: 23,500 SF
MECHANICAL @ MEZZANINE: 2,694 SF
BUILDING AREA (TOTAL): 50,407 SF, GROSS AREA PER METABIM

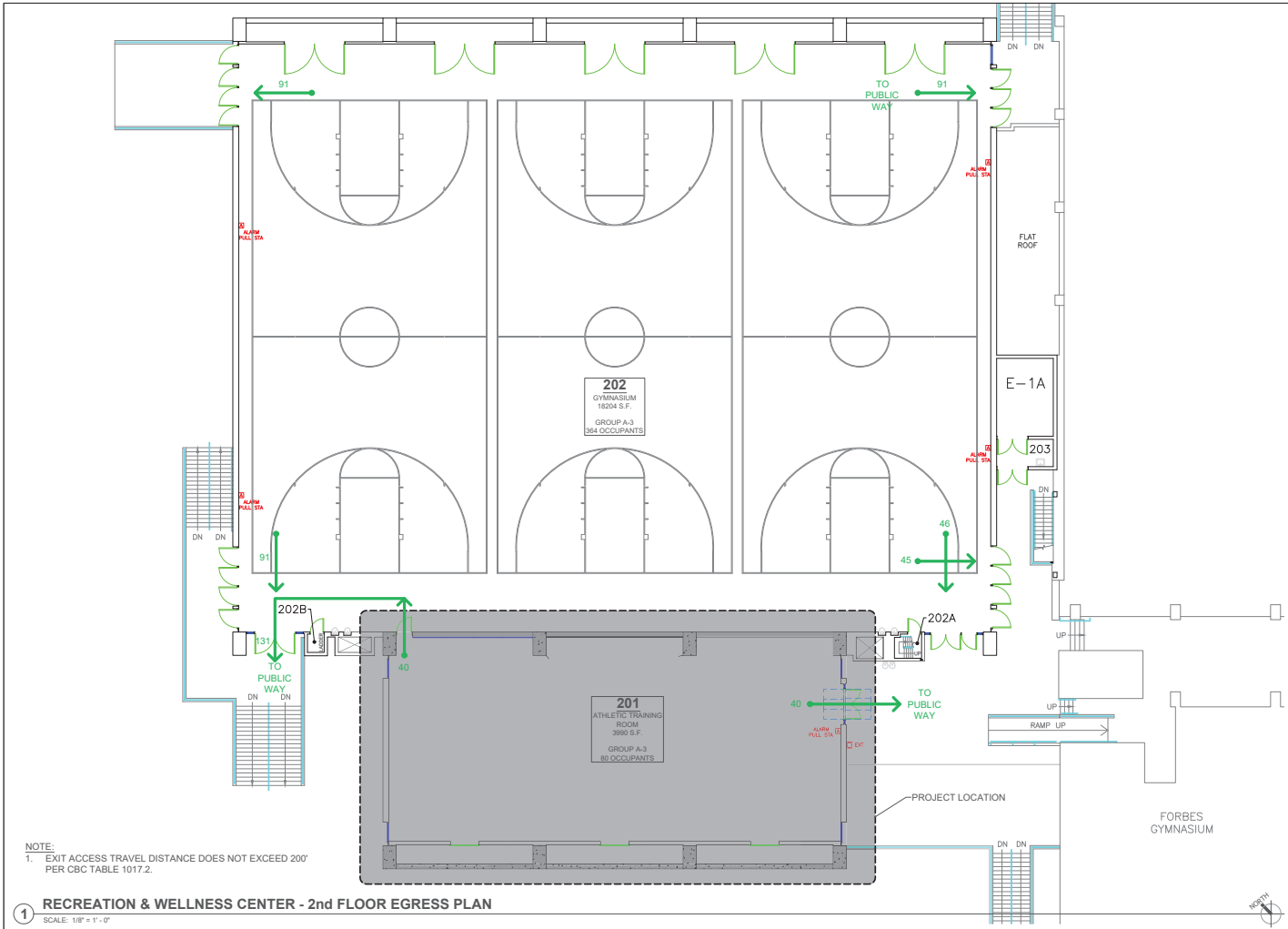
NON-SEPARATED USE: NON-SEPARATED
ALLOWABLE AREA PER (CBC): N/A (NO CHANGE)
AREA INCREASE: N/A (NO CHANGE)
HEIGHT INCREASE: N/A (NO CHANGE)

FIRE SPRINKLERS: NO (NO CHANGE)
FIRE ALARM: YES, AUTOMATIC (NO CHANGE)
OTHER FIRE PROTECTION SYSTEMS: PORTABLE FIRE EXTINGUISHERS & HOSES

1st FLOOR OCCUPANT LOAD: 353 OCCUPANTS
2nd FLOOR OCCUPANT LOAD: 445 OCCUPANTS
MECHANICAL OCCUPANT LOAD: 6 OCCUPANTS
BUILDING OCCUPANT LOAD (TOTAL): 804 OCCUPANTS
(OCCUPANT LOADS CALC PER 2019 CBC 11004.5)

HIGH FIRE HAZARD SEVERITY ZONE: NO
SEISMIC JOINTS: NO
EMERGENCY RESPONDER RADIO: N/A

PROJECT AREA OCCUPANT LOAD CALCULATIONS:
ROOM 201: 3990 S.F. / 7.50 S.F. PER OCC. = 80
PROJECT OCCUPANT LOAD: 80 OCCUPANTS



NOTE:
1. EXIT ACCESS TRAVEL DISTANCE DOES NOT EXCEED 200' PER CBC TABLE 1017.2.

RECREATION & WELLNESS CENTER - 2nd FLOOR EGRESS PLAN
SCALE: 1/8" = 1'-0"

SCOPE OF WORK

INSTALLATION OF NEW ATHLETIC FLOORING AND RUBBER BASE

SHEET INDEX

- A0.1 - TITLE SHEET, PROJECT DATA & SCOPE OF WORK (this sheet)
- A2.0 - PROPOSED FLOOR PLAN
- A2.1 - FLOORING SPECIFICATIONS

PROJECT CONTACTS

ARCHITECT OF RECORD
HOWARD MAXWELL
1 HARPST STREET
ARCATA, CA 95521
(707) 826-3646
howard.maxwell@humboldt.edu

PLANNING, DESIGN & CONSTRUCTION
KASSIDY BANDUCCI
1 HARPST STREET
ARCATA, CA 95521
(707) 826-5707
kassidy.banducci@humboldt.edu

ATHLETICS
COOPER JONES
1 HARPST STREET
ARCATA, CA 95521
(707) 826-3668
cooper.jones@humboldt.edu



FACILITIES MANAGEMENT
1 HARPST STREET
ARCATA, CA 95521
707 826-3646



SRC WEST ATHLETIC TRAINING ROOM
RECREATION & WELLNESS CENTER WEST GYM 201
RECREATION & WELLNESS CENTER (BLDG 024D)

STATUS
100% CONSTRUCTION DOCUMENTS

BUILDING PERMIT APPROVAL
This project has demonstrated compliance with applicable codes and standards established by state and University policy. Based on the information these documents are APPROVED FOR CONSTRUCTION.

KADREY BANUCCI
California Licensed Building Official
Humboldt State University
The California State University
Date: **JANUARY 6, 2023**
Permit #: **2022/23-008**

Other Approvals as applicable:
SFR Approval: _____
DSA Access Approval: _____
Seismic Peer Review: _____
Other: _____

CALIFORNIA STATE FIRE MARSHAL APPROVED
Approval of this plan does not authorize or approve any omission or deviation from applicable regulations. Final approval is subject to final inspection. Only the approved plans shall be available on the project site at all times.

Reviewed by: _____
PROJECT #: **XPL290**
W.O. #: _____
DRAWN BY: **HFM**
ISSUE DATE: **JAN 6, 2023**
REV: _____

SHEET TITLE
PROPOSED FLOOR PLAN

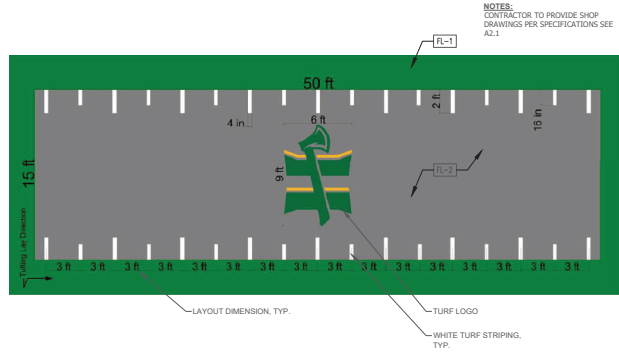
SHEET
A2.0
2 of 3 sheets

GENERAL NOTES:

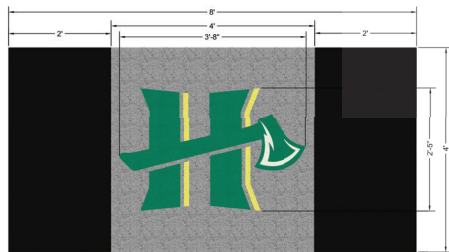
1. RESPECT EXISTING SLAB FOR DAMAGE. INFORM UNIVERSITY REPRESENTATIVE OF ANY AREAS OF CONCERN.
2. PREPARE SURFACE FOR NEW ATHLETIC FLOORING AS REQUIRED BY MANUFACTURER.
3. NEW RUBBER BASE THROUGHOUT SPACE TO BE INSTALLED AFTER NEW FLOORING IS INSTALLED. COORDINATE WITH UNIVERSITY REPRESENTATIVE BASIS OF DESIGN: JOHNSONITE ROLLED RUBBER BASE 6" & 4" CHARCOAL, OR EQUAL. 4" AT WOOD SLAT WALLS, 6" AT ALL OTHER WALL LOCATIONS.

FINISH NOTES:

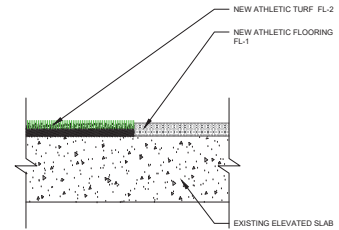
- FL-1 ECORE ATHLETIC E689 PERFORMANCE MONSTER WITH ATHLETIC INLAY PLATFORMS 8'X4' 12 MM MONSTER, OR EQUAL.
- FL-2 ECORE ATHLETIC FLEXTURF MONSTER W/ 12MM SHOCKPAD WITH CUSTOM LOGO, OR EQUAL. COLOR TBD.
- FL-3 ECORE ATHLETIC EBB & FLOW MOTIVATE VOVEN VINYL, CADET, OR EQUAL.
- FL-4 ECORE ATHLETIC INLAY PLATFORM 8' X 4', OR EQUAL.
- RP-1 ECORE ATHLETIC ELOO BASIC BLACK ULTRALITE ADA RAMP, OR EQUAL.



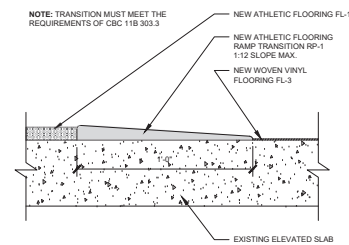
5 ATHLETIC TURF LAYOUT
SCALE: 1/8" = 1'-0"



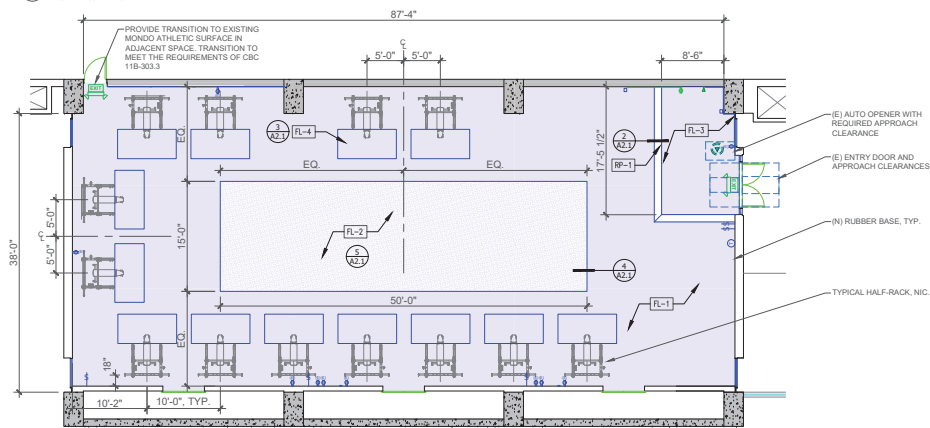
3 ATHLETIC INLAY PLATFORMS
SCALE: 1/8" = 1'-0"



4 FLOOR TRANSITION @ FL-1 & FL-2
Scale: 3" = 1'-0" D-FLOOR TRANS



2 FLOOR TRANSITION @ FL-1 & FL-3
Scale: 3" = 1'-0" D-FLOOR TRANS



1 PROPOSED FLOOR PLAN
SCALE: 1/8" = 1'-0"

SECTION 09 65 66 - RESILIENT ATHLETIC FLOORING

PART 1 - GENERAL

1.1 SUMMARY

A. Section Includes:

- Rubber sheet athletic flooring.

B. Related Sections:

- Section 09 68 19 "Interior Synthetic Turf" for turf area installed with flooring.

1.2 ACTION SUBMITTALS

A. Product Data: Submit product data, including manufacturer's guide specifications product sheet.

B. Sustainable Design Submittals:

- Product Data: For installation adhesives, indicating VOC content.
- Laboratory Test Reports: For installation adhesives, indicating compliance with requirements for low-emitting materials
- One or more of the following:
 - Environmental Product Declaration: For each product.
 - Third-Party Certifications: For each product.
 - Third-Party Certified Life Cycle Assessment: For each product.

C. Shop Drawings: Submit Shop Drawings showing layout, profiles and product components, including anchorage, accessories, finish coats, patterns, textures and inlays. Show installation details and locations of the following:

- Floor patterns.
- Locations of floor inserts for athletic equipment installed through flooring.
- Seam locations for sheet flooring.

D. Samples for Verification: For each type, color, and pattern of flooring indicated, 6-inch-square minimum Samples of same thickness and material indicated for the Work.

- Seam Samples, for heat-welded seams each vinyl sheet flooring color and pattern required; with seam running lengthwise and in center of 6-8-inch minimum Samples applied to a rigid backing and prepared by Installer for this Project.

1.3 INFORMATIONAL SUBMITTALS

A. Qualification Data: For qualified sheet vinyl flooring Installer.

1.4 CLOSEOUT SUBMITTALS

Maintenance Data: Submit copies of instructions for care, cleaning, maintenance and repair of resilient athletic flooring.

1.5 MAINTENANCE MATERIAL SUBMITTALS

A. Furnish extra materials, before installation begins, that match products installed and that are packaged with protective covering for storage and identified with labels describing contents.

- Sheet Flooring: Furnish full-width rolls of not less than 10 linear feet for a total of 3%, of each type, color, and pattern of flooring installed.

1.6 DELIVERY, STORAGE, AND HANDLING

A. Deliver materials in original packages and containers, with seals unbroken, bearing manufacturer's labels indicating brand name and directions for storing.

B. Store materials to prevent deterioration. Store rolls upright.

1.7 FIELD CONDITIONS

A. Adhesively Applied Products:

- Maintain temperatures during installation within range recommended in writing by manufacturer, but not less than 65 deg F or more than 80 deg F, in spaces to receive flooring 48 hours before installation, during installation, and 48 hours after installation unless longer period is recommended in writing by manufacturer.
- After post installation period, maintain temperatures within range recommended in writing by manufacturer, but not less than 55 deg F or more than 95 deg F.
- Close spaces to traffic during flooring installation.
- Close spaces after their 48 hours after flooring installation unless manufacturer recommends longer period in writing.

B. Install flooring after other finishing operations, including painting, have been completed. To be coordinated with University Representative and University Facilities Maintenance.

1.8 COORDINATION

A. Coordinate layout and installation of flooring with floor inserts for fitness equipment & other flooring materials.

1.9 WARRANTY

A. Special Manufacturer's Warranty: Written warranty, signed by turf manufacturer agreeing to replace turf that does not comply with requirements or that falls within specified warranty period. Warranty does not include deterioration or failure of turf due to unusual traffic, failure of substrate, vandalism, or abuse. Warranties shall be full term, not pro-rated for the specified warranty period.

- Warranty Period: 15 years from date of Substantial Completion.

C. Installation Warranty: Submit copies of written warranty signed by the turf installer and Contractor, warranting the turf installation, for a period of two years, that turf will not tear, crack, separate, deteriorate or pull loose from substrate, or experience seam failure, ripples, scallops, piling or puckering.

PART 2 - PRODUCTS

2.1 RUBBER SHEET FLOORING

A. Basis-of-Design Product: Subject to compliance with requirements, provide ECORE Athletic, Performance Monster series, as indicated on Drawings, or equal.

B. Description: Rubber athletic flooring provided as rolled goods for adhered installation.

C. Roll Size: Not less than 48 inches wide by longest length that is practical to minimize splicing during installation.

D. Thickness: 22.5 mm

E. Color and Pattern: As indicated on Drawings by manufacturer's designations.

2.2 RUBBER BACK SHEET WOVEN VINYL FLOORING

A. Basis-of-Design Product: Subject to compliance with requirements, provide ECORE Athletic, Ebb & Flow Motivate, as indicated on Drawings, or equal.

B. Description: Composition Rubber Back Sheet Woven Vinyl athletic flooring provided as rolled goods for adhered installation.

2.3 ACCESSORIES

A. Trowelable Leveling and Patching Compound: Latex-modified, hydraulic-cement-based formulation approved by flooring manufacturer.

B. Adhesives: Water-resistant type recommended in writing by manufacturer for substrate and conditions indicated.

C. Flooring transition:

- Basis of Design Product: Subject to compliance with requirements, provide ECORE Athletic, EL00 Basic Back Ultra Tile ADA Ramp, as indicated on Drawings, or equal

PART 3 - EXECUTION

3.1 EXAMINATION

A. Examine substrates, with Installer present, for compliance with requirements for installation tolerances, moisture content, and other conditions affecting performance of the Work.

- Verify that finishes of substrates comply with tolerances and other requirements specified in other Sections and that substrates are free of cracks, ridges, depressions, scale, and foreign deposits that might interfere with adhesion of resilient products.

B. Proceed with installation only after unsatisfactory conditions have been corrected.

3.2 PREPARATION

A. Prepare concrete substrate according to manufacturer's written recommendations to ensure adhesion of flooring.

- Verify that substrates are dry and free of curing compounds, sealers, and hardeners.
- Remove substrate coatings and other substances that are incompatible with adhesives and that contain soap, wax, oil, or silicone, using mechanical methods recommended in writing by manufacturer. Do not use solvents.

C. Examine the substrates, adjoining construction and the conditions under which the Work is to be installed. Verify recommended limits for moisture content and alkalinity of concrete substrates with manufacturer.

D. Use trowelable leveling and patching compound to fill cracks, holes, and depressions in substrates.

E. Move flooring and installation materials into spaces where they will be installed at least 48 hours in advance of installation unless manufacturer recommends a longer period in writing.

- Do not install flooring until they are same temperature as space where they are to be installed.

F. Sweep and vacuum clean substrates to be covered by flooring immediately before installation. After cleaning, examine substrates for moisture, alkaline salts, carbonation, and dust.

G. Proceed with installation only after unsatisfactory conditions have been corrected.

3.3 FLOORING INSTALLATION - GENERAL

A. Comply with manufacturer's written installation instructions.

B. Scribe, cut, and fit flooring to butt neatly and tightly to vertical surfaces, equipment anchors, floor outlets, and other interruptions of floor surface.

C. Extend flooring into toe spaces, door reveals, closets, and similar openings unless otherwise indicated.

D. Maintain reference markers, holes, and openings that are in place or marked for future cutting by repeating subfloor markings on flooring. Use nonpermanent, nonstaining marking device.

3.4 SHEET FLOORING INSTALLATION

A. Unroll sheet flooring and allow it to stabilize before cutting and fitting.

B. Lay out sheet flooring as follows:

- Maintain uniformity of flooring direction.
- Match number of seams; place seams in inconspicuous and low-traffic areas, at least 6 inches away from parallel joints in flooring substrates.
- Minimize edges of flooring for color shading at seams.
- Locate seams per approved Shop Drawings.

C. Adhered Flooring: Adhere products to substrates using a full spread of adhesive applied to substrate to comply with adhesive and flooring manufacturer's written instructions, including those for trowel notching, adhesive mixing, and adhesive open and working times.

- Provide completed installation without open cracks, voids, raising and puckering at joints, telegraphing of adhesive spreader marks, and other surface imperfections.

3.5 CLEANING AND PROTECTING

A. Perform the following operations immediately after completing flooring installation:

- Remove adhesive and other blemishes from flooring surfaces.
- Sweep and vacuum flooring thoroughly.
- Damp-mop flooring to remove marks and soil after time period recommended in writing by manufacturer.

B. Protect flooring from marks, marks, indentations, and other damage from construction operations and placement of equipment and fixtures during remainder of construction period. Use protection methods recommended in writing by manufacturer.

- Do not move heavy and sharp objects directly over flooring. Protect flooring with plywood or hardboard panels to prevent damage from storing or moving objects over flooring.

END OF SECTION 09 65 66

SECTION 09 68 19 - INTERIOR SYNTHETIC TURF

PART 1 - GENERAL

1.1 SUMMARY

A. Section Includes interior synthetic turf.

1.2 PRE-INSTALLATION MEETINGS

A. Pre-Installation Conference: Conduct conference at Project site.

- Review methods and procedures related to turf installation including, but not limited to, the following:
 - Review delivery, storage, and handling procedures.
 - Review ambient conditions and ventilation procedures.
 - Review subfloor preparation procedures.

1.3 ACTION SUBMITTALS

A. Product Data: Submit product data, specifications, installation instructions for materials specified herein and other data as may be required to show compliance with the Contract Documents. Include installation recommendations for specific type of substrate.

B. Shop Drawings: Submit shop drawings showing the following:

- Seam locations and direction, types, and methods.
- Type of subfloor.
- Type of installation.
- Include on shop drawings dimensions which verify field conditions.
- Transition, and other accessory strips.
- Transition details to other flooring materials.

1.4 INFORMATIONAL SUBMITTALS

A. Warranties: Submit special warranties specified in this Section.

1.5 CLOSEOUT SUBMITTALS

A. Maintenance Data: Submit copies of instructions for care, cleaning, maintenance and repair of interior synthetic turf.

1.6 QUALITY ASSURANCE

A. Installer Qualifications: Engage a turf installer, who has completed a minimum of three projects over the last 10 years which were similar in material, design and extent to that indicated for the Project -- as determined by the Architect -- and which have resulted in construction with a record of successful in service performance.

1.7 DELIVERY, STORAGE, AND HANDLING

A. Protect synthetic turf rolls and accessories from damage during delivery and store in a dry area or elevate above ground, under an impermeable tarp when time from delivery to installation exceeds one week.

B. Deliver other materials in manufacturer's unopened containers identified with name, brand, type, grade, class, and other qualifying information.

C. Store materials in a dry location, at temperature and humidity conditions with manufacturer, in such a manner as to prevent damage.

1.8 FIELD CONDITIONS

A. Environmental Limitations: Do not deliver or install turf until wet work in spaces is complete and dry, and ambient temperature and humidity conditions are maintained at the levels indicated for Project when occupied for its intended use.

B. Do not install turf over concrete slabs until slabs have cured, are sufficiently dry to bond with adhesive, and concrete slabs have pH range recommended by turf manufacturer.

C. Temperature Requirements: Maintain air temperature in spaces where products will be installed for time period before, during, and after installation as recommended by manufacturer.

D. Field Measurements: Verify actual measurements/openings by field measurements before fabrication; shop recorded measurements on shop drawings. Coordinate field measurements and fabrication schedule with construction progress to avoid construction delays.

1.9 WARRANTY

A. Special Manufacturer's Warranty: Written warranty, signed by turf manufacturer agreeing to replace turf that does not comply with requirements or that falls within specified warranty period. Warranty does not include deterioration or failure of turf due to unusual traffic, failure of substrate, vandalism, or abuse. Warranties shall be full term, not pro-rated for the specified warranty period.

- Warranty Period: 15 years from date of Substantial Completion.

B. Installation Warranty: Submit copies of written warranty signed by the turf installer and Contractor, warranting the turf installation, for a period of two years, that turf will not tear, crack, separate, deteriorate or pull loose from substrate, or experience seam failure, ripples, scallops, piling or puckering.

PART 2 - PRODUCTS

2.1 INTERIOR SYNTHETIC TURF

A. Basis of Design Product: Subject to compliance with requirements, provide FlexTurf Monster, manufactured by Ecore Athletic as indicated on Drawings, or equal.

B. Product Characteristics: Interior synthetic turf (roll goods), with 12mm Shockpad

C. Flooring products shall comply with requirements of the California Department of Public Health's "Standard Method for the Testing and Evaluation of Volatile Organic Chemical Emissions from Indoor Sources Using Environmental Chambers."

2.2 INSTALLATION ACCESSORIES

A. Trowelable Leveling and Patching Compounds: Portland cement based formulation provided by or recommended by the manufacturer. Do not use gypsum based compounds.

B. Adhesives: Water-resistant, mildew resistant, and nonstaining, high solids, low VOC emitting formulations that are specifically recommended by the turf manufacturer, as verified through compatibility and adhesion testing for the intended substrate and application, and that comply with flammability requirements for installed turf.

- Adhesives shall have a VOC content of 50 g/L or less.
- Adhesive shall comply with the testing and product requirements of the California Department of Public Health's "Standard Method for the Testing and Evaluation of Volatile Organic Chemical Emissions from Indoor Sources Using Environmental Chambers."

C. Seaming Tape: Hot melt adhesive tape, 6 inches wide, recommended by the turf manufacturer as suitable for backing specified PART 3 - EXECUTION

3.1 EXAMINATION

A. Examine substrates and conditions, with Installer present, for compliance with requirements for substrate conditions, and other conditions affecting performance of the Work.

B. Proceed with installation only after unsatisfactory conditions have been corrected. Commencement of work constitutes installer's acceptance of substrate.

3.2 PREPARATION

A. General: Comply with turf manufacturer's written installation instructions for preparing substrates.

B. Coordinate the installation of turf so as not to delay the occupancy of the site or interfere with the completion of construction.

C. Examine the substrates, adjoining construction and the conditions under which the Work is to be installed. Verify recommended limits for moisture content and alkalinity of concrete substrates with manufacturer.

D. Concrete Subfloors: Verify that concrete slabs comply with the following:

- Provide one of the following:
 - Remove coatings, including curing compounds, existing floor covering adhesive residues, and other substances that are incompatible with adhesives and that contain soap, wax, oil, or silicone, without using solvents. Use mechanical methods recommended in writing by the turf manufacturer.
 - In lieu of mechanical substrate preparation methods the Contractor may utilize floor sealer materials and methods of the types and methods as recommended, in writing, by the turf manufacturer. Apply sealer in number of coats, and at the spread rate, as required by the turf manufacturer.

2. Slab substrates are dry and free of curing compounds, sealers, hardeners, and other materials that may interfere with adhesive bond. Determine adhesion and dryness characteristics by performing bond and moisture tests recommended by the turf manufacturer.

3. Use leveling and patching compounds recommended by flooring manufacturer for filling cracks, holes and depressions in the substrate. Surface shall be smooth, level and at proper elevation. Remove ridges, roughness and protrusions from concrete surfaces by grinding.

E. Broom and vacuum clean substrates to be covered immediately before installing turf.

F. Installation shall not commence until painting and finishing work are complete and ceiling and overhead work is tested, approved, and completed.

G. Proceed with installation only after unsatisfactory conditions have been corrected.

3.3 INSTALLATION

A. General: Comply with manufacturer's written installation guidelines and as follows:

- Lay turf so that grain runs in one direction and against the slope. Replace and discard turf that has obvious defects.
- Make turf seams in accordance with as many roll widths as the job requires. Seaming must be done in a manner to ensure no trip hazards.
 - Where seaming is required (multiple roll widths), trim the set-edge (on-fluted edge) off of one roll and lay it on the base, in the desired position.
 - Lay the next roll adjacent to the first and overlap one edge of the adjacent roll of turf on top of the trimmed edge of the first roll.
 - With scissors or razor knife, trim the overlapped roll to match the trimmed edge of the first roll.
 - Make all cuts as close as possible without touching.
 - Repeat as needed for as many roll widths as the job requires.
 - Around the borders, trim the turf to match the edges.
 - Fold the adjacent trimmed edges of two rolls of turf approximately two feet apart the entire length of the seam.
 - Mark the centerline of the seam on the exposed base with a chalk line or spray paint.
 - Hill roll out seam tape centered over the entire length of the seam line. Apply adhesive covering all of the seam tape from one end to the other. Depending on the type of adhesive used, you may need to allow time for vapors/gases to escape (flashing). Refer to the adhesive manufacturer's directions. The flashing time required may be dependent on ambient temperature and humidity.
 - After adhesive has flashed, lay the edges of each roll of turf directly onto the adhesive/tape, making sure not to bury any grass fibers into the adhesive.
 - Be sure to add weight (i.e. sandbags) down the length of the freshly laid seam, or use a heavy roller along the seam length. The adhesive drying / curing time will vary with different adhesives dependent upon climatic conditions.
- Follow the adhesive manufacturer's instructions.
- Secure edges of turf after the main body of the turf area has been stabilized, the perimeter edge should be secured in a manner to avoid trip hazard, edge fray, etc.

3.4 CLEANING AND PROTECTION

A. Cleaning: As the turf is installed, remove and dispose of all trimmings, excess pieces of turf and laying materials from each area as it is completed. Remove adhesives, stains, and soil spots in accordance with the turf manufacturer's recommendations.

B. Protection: Protect turf against damage of every kind as damaged turf shall be rejected. Use non-staining cover material for protection. Tape joints of protective covering.

- Plastic and polyethylene sheet protective coverings shall not be permitted unless specifically accepted in writing by the turf manufacturer.
- Remove and replace rejected turf with new turf in full compliance of the work and when directed by the Architect, remove covering, vacuum clean turf and remove soiling and stains (if any) to the satisfaction of the Architect.

END OF SECTION 09 68 19

GENERAL NOTES:

1. CONTRACTOR TO PROVIDE OVERSTOCK FOR ALL FLOORING MATERIALS TO UNIVERSITY AT PROJECT CLOSE OUT.



FACILITIES MANAGEMENT
1 HARPST STREET
ARCATA, CA 95521
707 826-3646



SRC WEST ATHLETIC TRAINING ROOM
RECREATION & WELLNESS CENTER WEST GYM 201
RECREATION & WELLNESS CENTER (BLDG 024D)

STATUS
100% CONSTRUCTION DOCUMENTS

BUILDING PERMIT APPROVAL
This project has been submitted and approved by the appropriate authorities established by statute and University policy. Submit the following information if these documents are APPROVED FOR CONSTRUCTION:

KELSEY BARUCCI
California State University
Humboldt State University
The California State University

Date: JANUARY 6, 2023
Permit #: 2022/23-008

Show approval as applicable:
SFR Approval: _____
USA Access Approval: _____
Seismic Peer Review: _____
Other: _____

CALIFORNIA STATE FIRE MARSHAL APPROVED
Approval of this plan does not constitute or approve any emission or discharge from applicable equipment. Final approval is subject to final inspection. One set of approved plans shall be available on the project site at all times.

NA

Reviewed by: _____
PROJECT # XPL290
W.O. #: _____
DRAWN BY: HFM

ISSUE DATE: JAN. 6, 2023
REV: _____

SHEET TITLE
FLOORING SPECIFICATIONS
SHEET
A2.1
3 of 3 sheets