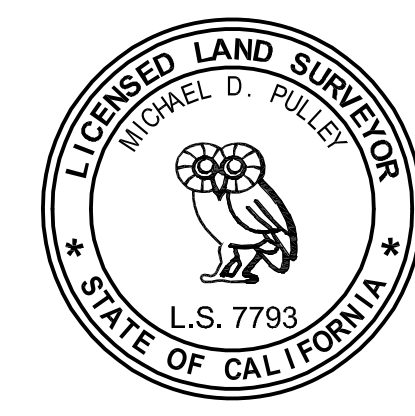


Exhibit A: Survey representing the conditions on site prior to execution of the *Campus Events Field Temporary Housing Project*.

SURVEYOR'S STATEMENT

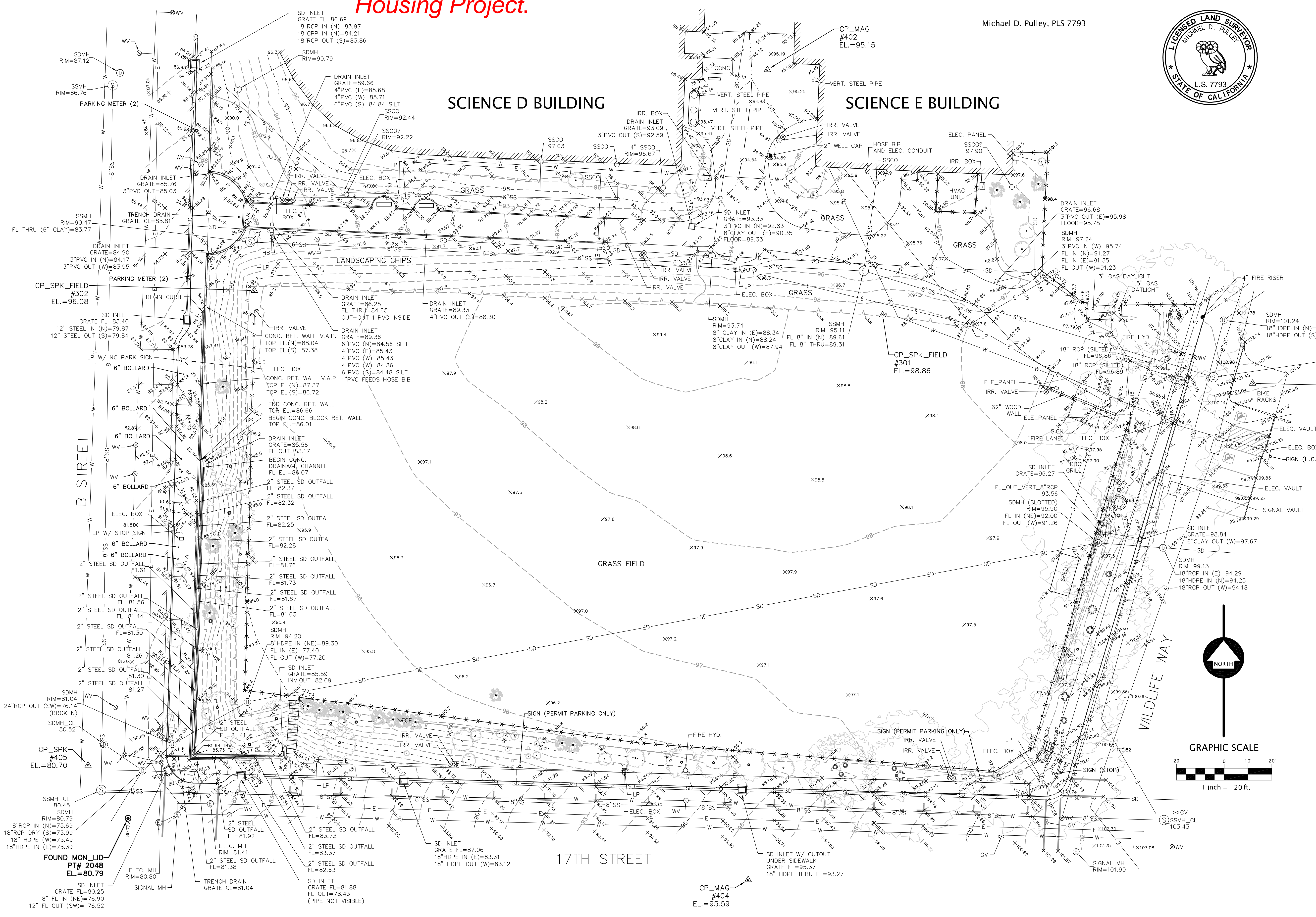
This map represents a field survey performed under my direction in January 2017 at the request of Humboldt State University.

Michael D. Pulley, PLS 7793



SURVEY NOTES

- This map is based on a field survey performed in December & January 2018 and represents conditions at that time.
- Horizontal datum for this project is the California Coordinate System of 1983 (CCS83), Zone 1, US feet. Coordinates were derived via ties to the High Precision Geodetic Network (HPGN). The derived grid coordinate was held on Control Point 301 shown hereon and rotated to grid bearings using Control Point 302. This project file has ground distances, not grid distances; no scale factor was applied to the point data gathered by this survey.
- Vertical datum for this project is the North American Vertical Datum of 1988 (NAVD88) per ties the HPGN as per Note 2 above. No campus benchmarks exist on the project site.
- Trees shown hereon were located at base of tree; diameters shown are generally at breast height. Not all tree labels are able to be shown on this plot; see electronic file for point descriptions for tree labels not shown. Some deciduous trees could not be identified as to species since no leaves were present. The median area along the north side of 17th Street contains many exotic non-native species with identifying placards; placard information is not shown hereon. Tree labels are not shown hereon for clarity; see electronic file for information on type and size.



LEGEND

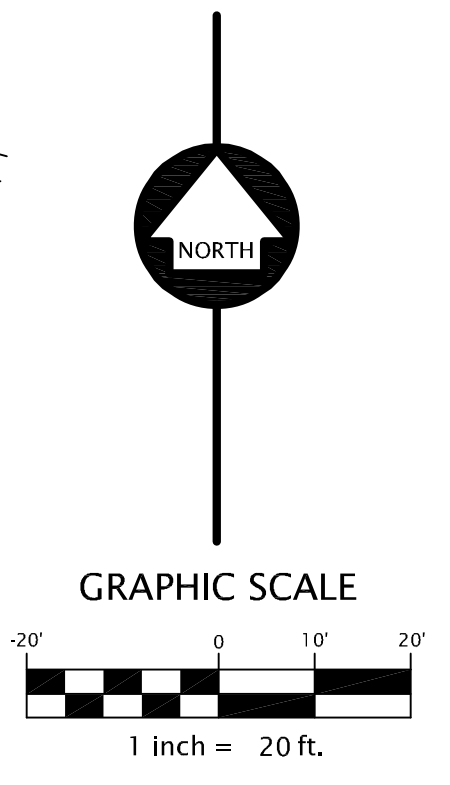
	EDGES OF ASPHALT PAVEMENT
	EXISTING GROUND CONTOURS
	GAS LINE
	UNDERGROUND ELECTRIC LINE
	UNDERGROUND TELECOM LINES
	SANITARY SEWER LINE
	STORM DRAIN CULVERT
	WATER LINE
	ABANDONED WATER LINES
	GAS METER
	FIRE HYDRANT
	WATER METER
	WATER VALVE
	ELECTRIC MANHOLE
	TELECOM MANHOLE
	SANITARY SEWER CLEANOUT
	STORM DRAIN MANHOLE
	STORM DRAIN CLEANOUT

UTILITY NOTES

See adjacent Underground Utility Note regarding utility locations. Utilities shown hereon are based on visible appurtenances located in the field, and GIS mapping provided by HSU. Utilities noted as abandoned in GIS mapping are not shown hereon. Irrigation valves are shown hereon; irrigation line routing is not. The subdrain system under the Campus Events Field is not shown hereon; GIS mapping shows 4" perforated PVC running north-south at roughly 10 foot spacing running into 8" PVC perimeter piping that exits at the southwest corner of the field.

UNDERGROUND UTILITY NOTE

Underground utilities are shown based on a combination of visible physical evidence and records made available to the surveyor. The surveyor makes no guarantees that the underground utilities shown comprise all such utilities in the area, either in service or abandoned. The surveyor further does not warrant that the underground utilities are in the exact locations indicated, although the surveyor does hereby state that they are shown as accurately as possible from the available information, noted above. The surveyor has not physically located the underground utilities.



TOPOGRAPHIC SURVEY
 for
HUMBOLDT STATE UNIVERSITY
CAMPUS EVENTS FIELD
 SECTION 28 T6N R1E
 HUMBOLDT MERIDIAN
 IN THE CITY OF ARCATA
 HUMBOLDT COUNTY, CALIFORNIA
 DECEMBER 2017

SCALE: 1" = 20' SHEET 1 OF 1

POINTS WEST SURVEYING Co.
 5201 Carlson Park Dr., Suite 3 - Arcata, CA 95521
 707-840-9510 - Phone 707-840-9542 - Fax