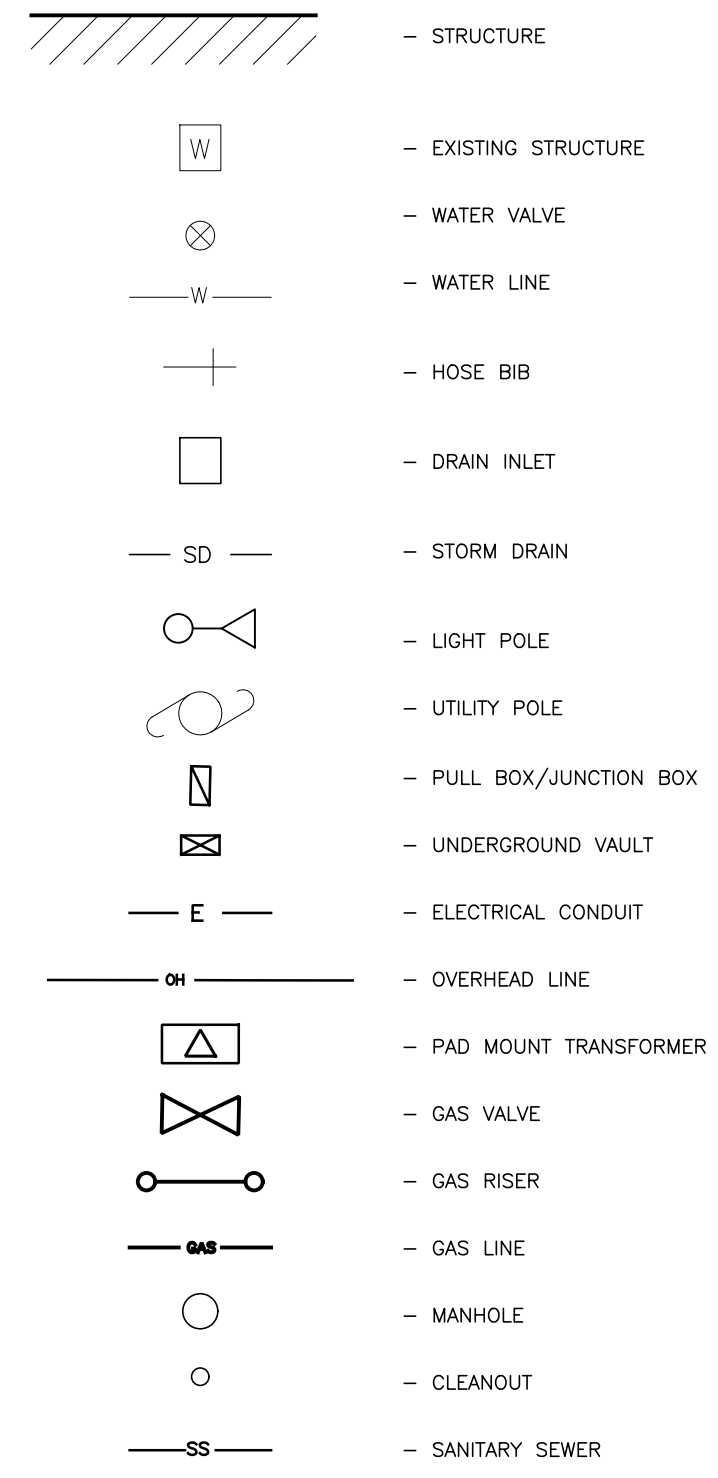


UTILITY NOTES

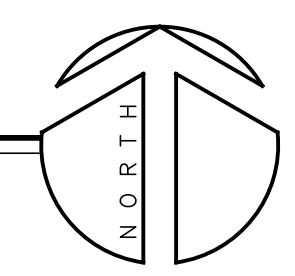
1. UTILITIES SHOWN ARE BASED ON USA MARKINGS AND UTILITY MAPS ON FILE WITH CAL POLY HUMBOLDT. ALL UNDERGROUND UTILITIES ARE ASSUMED.

UTILITY LEGEND



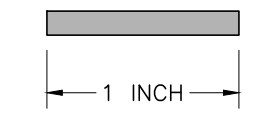
EXISTING UTILITIES

SCALE: 1" = 20'



UTILITIES

THESE PLANS ARE ORIGINALLY PRINTED ON 22"x34" PAPER.



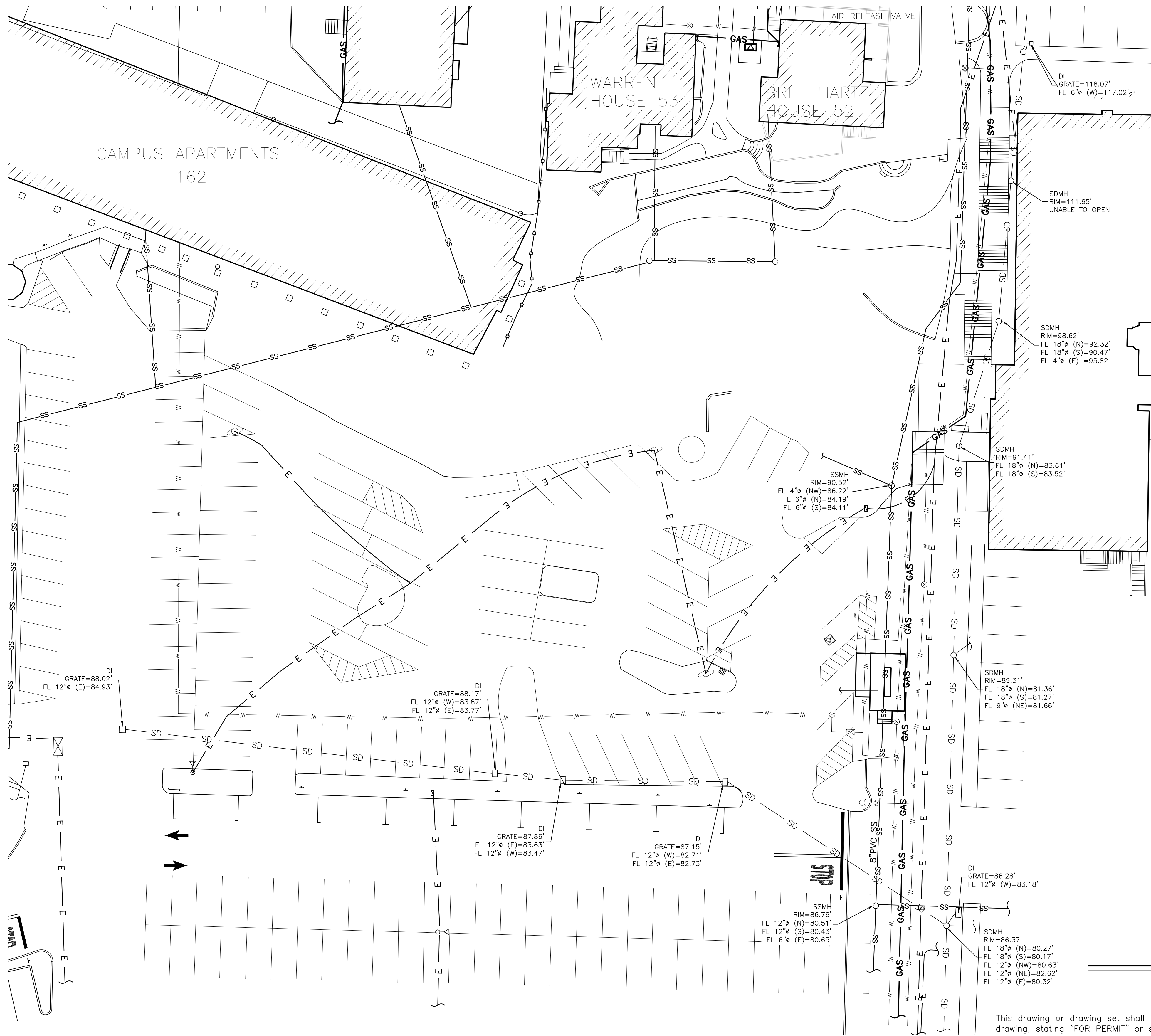
REVISIONS	BY

WHITCHURCH ENGINEERING, INC.
610 9th Street Fortuna, California 95540
Phone (707) 725-6926

CAL POLY HUMBOLDT SURVEY
1 HARPST ST. ARCATA CA, 95521
APN: 020-063-007
EXISTING PARTIAL UTILITY PLAN
For: FRED SALDANA fred.saldano@humboldt.edu
7/17/2023

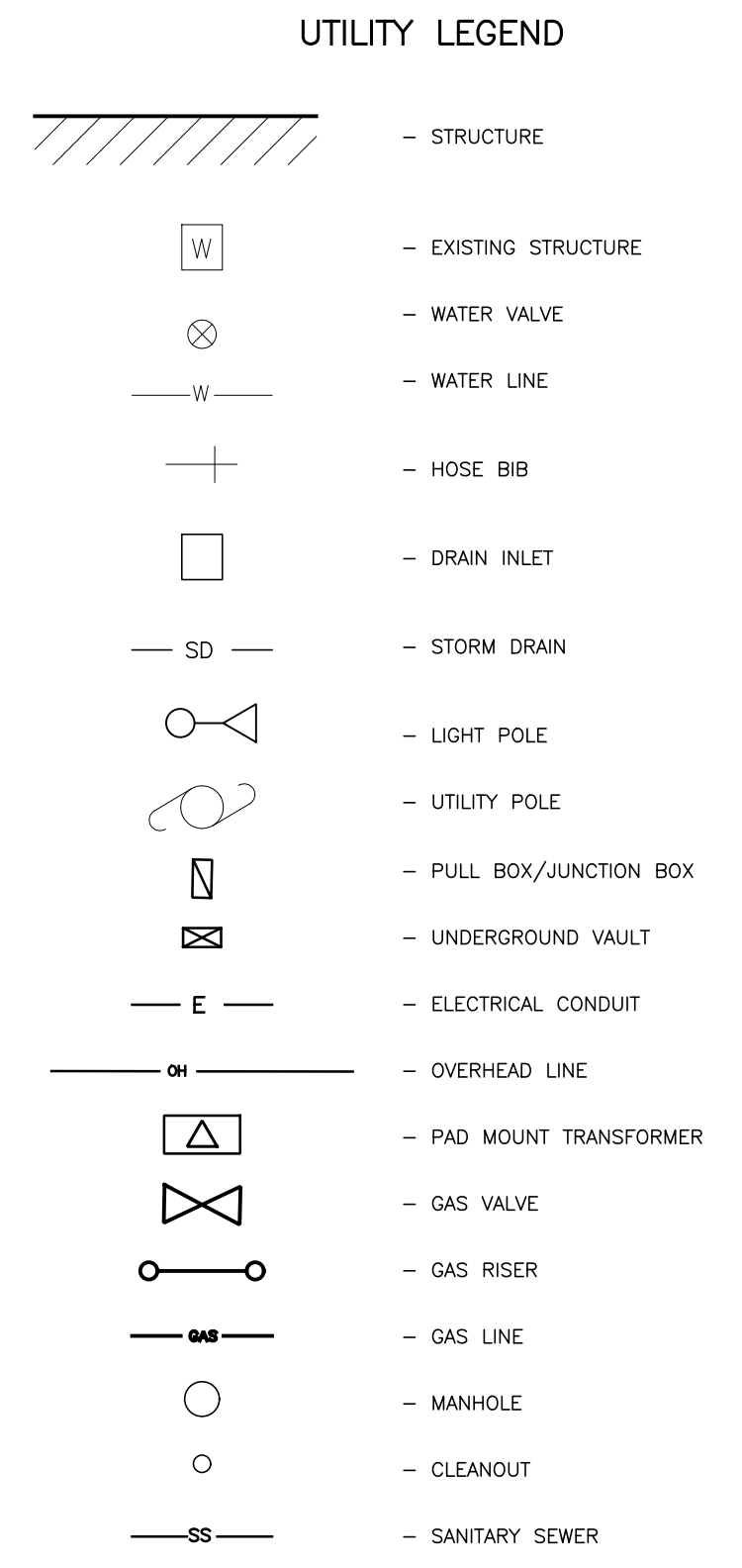
Date	JULY 17, '23
Scale	AS NOTED
Design	MJB
Drawn	MJB
Job	CPY2301
Sheet	1

This drawing or drawing set shall not be used for construction unless a jurisdictional stamp (County, City, State, Federal) has been issued on the drawing, stating "FOR PERMIT" or similar verbiage, a wet signed professional engineer's stamp, and permit documents have been issued for the project.

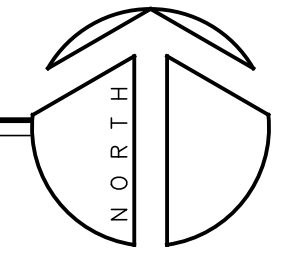


UTILITY NOTES

1. UTILITIES SHOWN ARE BASED ON USA MARKINGS AND UTILITY MAPS ON FILE WITH CAL POLY HUMBOLDT. ALL UNDERGROUND UTILITIES ARE ASSUMED.

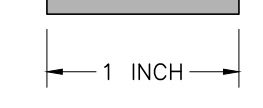


EXISTING UTILITIES
SCALE: 1" = 20'



UTILITIES

THESE PLANS ARE ORIGINALLY PRINTED ON 22"x34" PAPER.



This drawing or drawing set shall not be used for construction unless a jurisdictional stamp (County, City, State, Federal) has been issued on the drawing, stating "FOR PERMIT" or similar verbiage, a wet signed professional engineer's stamp, and permit documents have been issued for the project.

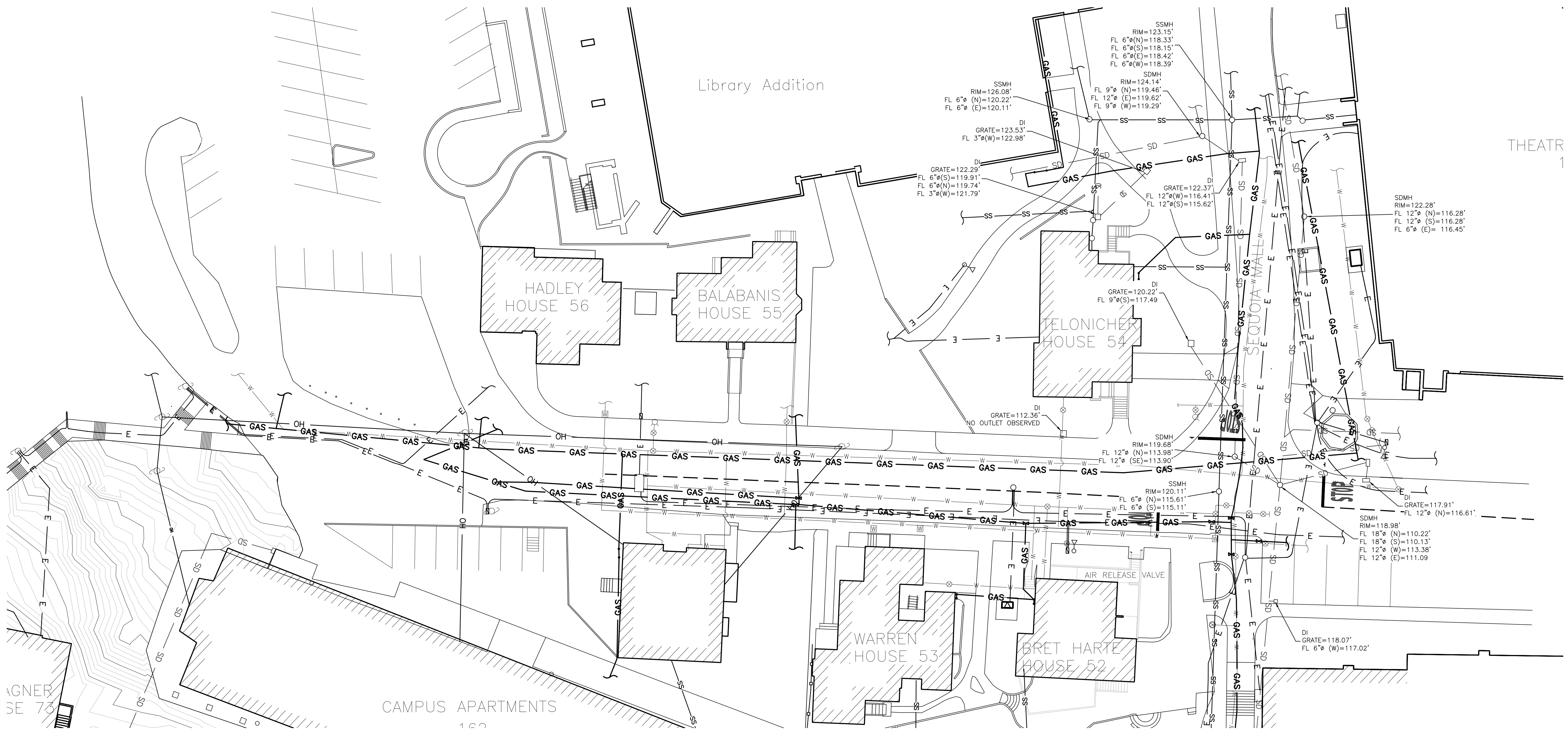
REVISIONS	BY

WHITCHURCH ENGINEERING, INC.
610 9th Street Fortuna, California 95540
Phone (707) 725-6926

CAL POLY HUMBOLDT SURVEY
1 HARPST ST. ARCATA CA. 95521
APN: 020-063-007

PARTIAL EXISTING UTILITY PLAN
For: FRED SALDANA fred.saldano@humboldt.edu
7/17/2023

Date JULY 17, '23
Scale AS NOTED
Design MJB
Drawn MJB
Job CPY2301
Sheet 2



UTILITY NOTES

- UTILITIES SHOWN ARE BASED ON USA MARKINGS AND UTILITY MAPS ON FILE WITH CAL POLY HUMBOLDT. ALL UNDERGROUND UTILITIES ARE ASSUMED.

UTILITY LEGEND

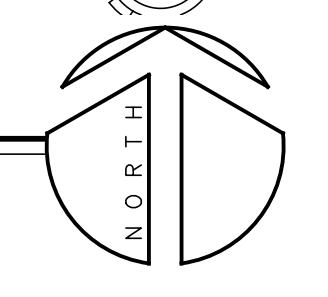
	- STRUCTURE
	- EXISTING STRUCTURE
	- WATER VALVE
	- WATER LINE
	- HOSE BIB
	- DRAIN INLET
	- STORM DRAIN
	- LIGHT POLE
	- UTILITY POLE
	- PULL BOX/JUNCTION BOX
	- UNDERGROUND VAULT
	- ELECTRICAL CONDUIT
	- OVERHEAD LINE

UTILITY LEGEND

	- PAD MOUNT TRANSFORMER
	- GAS VALVE
	- GAS RISER
	- GAS LINE
	- MANHOLE
	- CLEANOUT
	- SANITARY SEWER

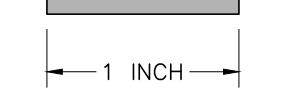
EXISTING UTILITY

SCALE: 1" = 20'



UTILITIES

THESE PLANS ARE ORIGINALLY PRINTED ON 22"x34" PAPER.



This drawing or drawing set shall not be used for construction unless a jurisdictional stamp (County, City, State, Federal) has been issued on the drawing, stating "FOR PERMIT" or similar verbiage, a wet signed professional engineer's stamp, and permit documents have been issued for the project.

REVISIONS	BY

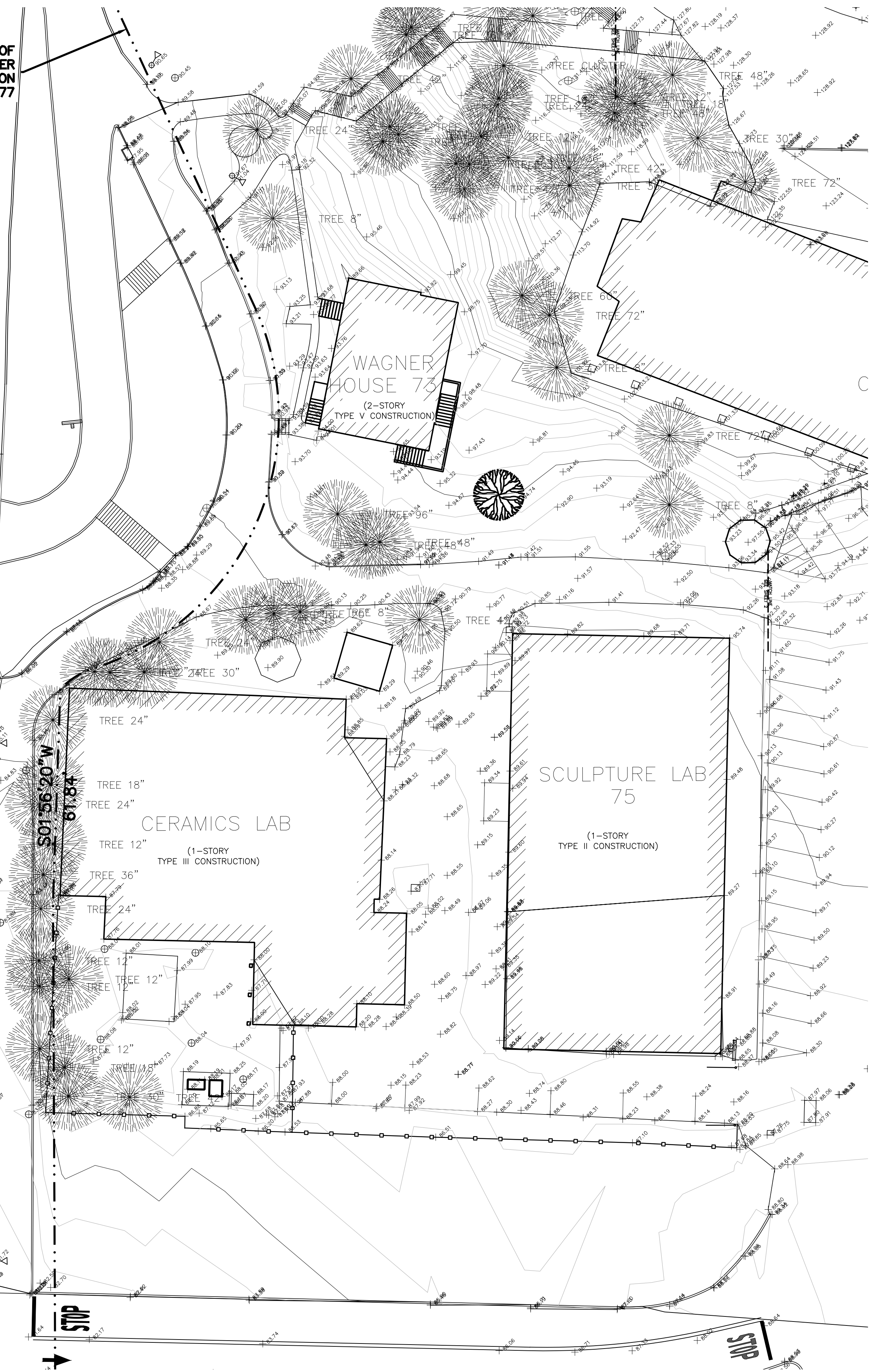
WHITCHURCH ENGINEERING, INC.
610 9th Street Fortuna, California 95540
Phone (707) 725-6926

CAL POLY HUMBOLDT SURVEY
1 HARPST ST. ARCATA CA, 95521
APN: 020-063-007
EXISTING PARTIAL UTILITY PLAN
For: FRED SALDANA fred.saldano@humboldt.edu
7/17/2023

Date	JULY 17, '23
Scale	AS NOTED
Design	MJB
Drawn	MJB
Job	CPY2301
Sheet	3

APPARENT RIGHT OF WAY OF
LK WOOD BLVD. PLOTTED PER
CALTRANS MONUMENTATION
MAPS, 1967-1977

LK Wood Blvd.



NOTES:

1. INFORMATION SHOWN HEREON IS FROM DYLAN KOLSTAD LS 8152, BASED ON FIELD SURVEY JUNE 14-15, 2023, AND WHITCHURCH ENGINEERING INC BASED ON FIELD SURVEY 5/31 - 6/16 2023.
2. SCOPE OF WORK IS LIMITED TO WESTERLY PROPERTY BOUNDARY OF HUMBOLDT STATE UNIVERSITY / CALIFORNIA STATE POLYTECHNIC UNIVERSITY, HUMBOLDT NEAR ASSESSOR'S PARCEL NUMBER 020-063-007, AND LOCATION OF EASEMENT(S) ALONG LK WOOD BLVD. IN THIS VICINITY. NO TITLE REPORT NOR SPECIFIC DEEDS RELATIVE TO THIS AREA WAS PROVIDED TO THE SURVEYOR. PROPERTY BOUNDARY SHOWN IS THE EAST RIGHT OF WAY LINE OF HIGHWAY 101, FROM MEASUREMENTS TO SURVEY FOR HUMBOLDT STATE UNIVERSITY, FILED IN BOOK 58 OF SURVEYS, PAGES 28-29. MAPPING FROM CALTRANS RELATIVE TO FORMER HIGHWAY POSSESSION OF LK WOOD HAS BEEN REQUESTED AND IS FORTHCOMING.
3. HORIZONTAL COORDINATES PROVIDED HEREON ARE CALIFORNIA COORDINATE SYSTEM NAD 83 (2011) ZONE 1, EPOCH 2010.0, BASED ON MEASUREMENTS TO NGS PID "DH6345". DIVIDE COORDINATES AND DISTANCES SHOWN BY 0.99989830 TO ACHIEVE GROUND DISTANCES. ELEVATIONS ON FIELD POINTS SHOWN HEREON ARE ON NAVD'88 DATUM, HOLDING ELEVATION 10.50 FEET ON THIS CONTROL POINT.
4. UTILITIES ARE SHOWN ARE BASED ON USA MARKINGS, EXISTING UTILITY MAPS AND VISUAL OBSERVATIONS.

REVISIONS	BY

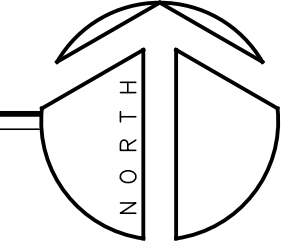
WHITCHURCH ENGINEERING, INC.
610 9th Street Fortuna, California 95540
Phone (707) 725-6926

CAL POLY HUMBOLDT SURVEY
1 HARPST ST. ARCATA CA, 95521
APN: 020-063-007
AREA A WEST SECTION
For: FRED SILDANA fred.saldana@humboldt.edu

Date	JULY 17, '23
Scale	AS NOTED
Design	MJB
Drawn	MJB
Job	CPY2301
Sheet	4

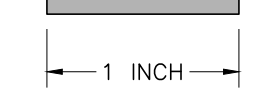
AREA A - WEST SECTION

SCALE: 1" = 20'

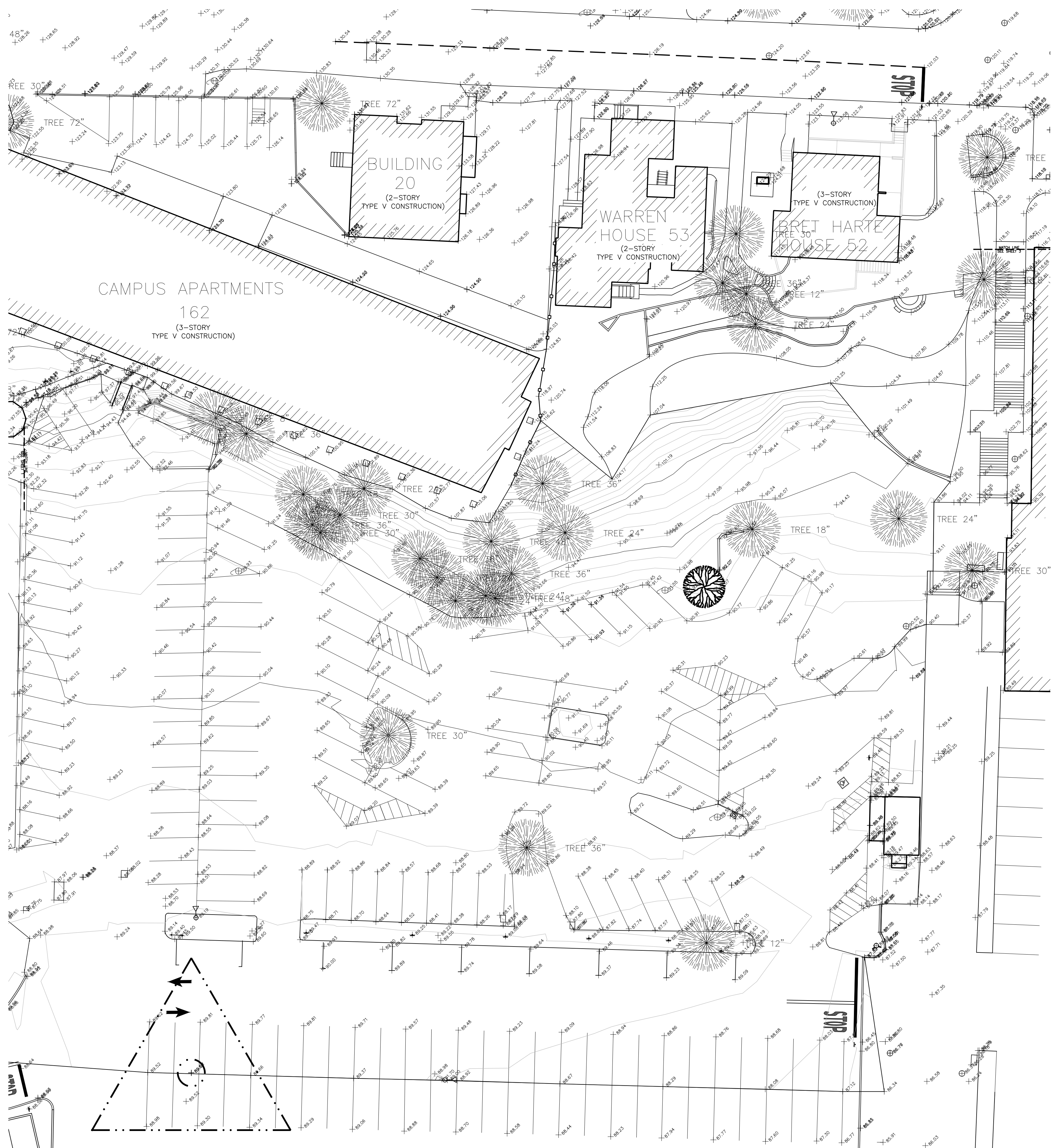


TOPO

THESE PLANS ARE ORIGINALLY
PRINTED ON 22"x34" PAPER.



This drawing or drawing set shall not be used for construction unless a jurisdictional stamp (County, City, State, Federal) has been issued on the drawing, stating "FOR PERMIT" or similar verbiage, a wet signed professional engineer's stamp, and permit documents have been issued for the project.



- NOTES:
1. INFORMATION SHOWN HEREON IS FROM DYLAN KOLSTAD LS 8152, BASED ON FIELD SURVEY JUNE 14-15, 2023, AND WHITCHURCH ENGINEERING INC BASED ON FIELD SURVEY 5/31 - 6/16 2023.
 2. SCOPE OF WORK IS LIMITED TO WESTERLY PROPERTY BOUNDARY OF HUMBOLDT STATE UNIVERSITY / CALIFORNIA STATE POLYTECHNIC UNIVERSITY, HUMBOLDT NEAR ASSESSOR'S PARCEL NUMBER 020-063-007, AND LOCATION OF EASEMENT(S) ALONG LK WOOD BLVD. IN THIS VICINITY. NO TITLE REPORT NOR SPECIFIC DEEDS RELATIVE TO THIS AREA WAS PROVIDED TO THE SURVEYOR. PROPERTY BOUNDARY SHOWN IS THE EAST RIGHT OF WAY LINE OF HIGHWAY 101, FROM MEASUREMENTS TO SURVEY FOR HUMBOLDT STATE UNIVERSITY, FILED IN BOOK 58 OF SURVEYS, PAGES 28-29. MAPPING FROM CALTRANS RELATIVE TO FORMER HIGHWAY POSSESSION OF LK WOOD HAS BEEN REQUESTED AND IS FORTHCOMING.
 3. HORIZONTAL COORDINATES PROVIDED HEREON ARE CALIFORNIA COORDINATE SYSTEM NAD 83 (2011) ZONE 1, EPOCH 2010.0, BASED ON MEASUREMENTS TO NGS PID "DH6345". DIVIDE COORDINATES AND DISTANCES SHOWN BY 0.99989830 TO ACHIEVE GROUND DISTANCES. ELEVATIONS ON FIELD POINTS SHOWN HEREON ARE ON NAVD'88 DATUM, HOLDING ELEVATION 10.50 FEET ON THIS CONTROL POINT.
 4. UTILITIES ARE SHOWN ARE BASED ON USA MARKINGS, EXISTING UTILITY MAPS AND VISUAL OBSERVATIONS.

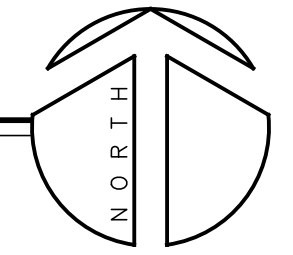
REVISIONS	BY

WHITCHURCH ENGINEERING, INC.
610 9th Street Fortuna, California 95540
Phone (707) 725-6926

CAL POLY HUMBOLDT SURVEY
1 HARPST ST. ARCATA CA. 95521
APN: 020-063-007
AREA A - EAST SECTION
For: FRED SILDANA fred.saldana@humboldt.edu

Date	JULY 17, '23
Scale	AS NOTED
Design	MJB
Drawn	MJB
Job	CPY2301
Sheet	5

AREA A - EAST SECTION
SCALE: 1" = 20'

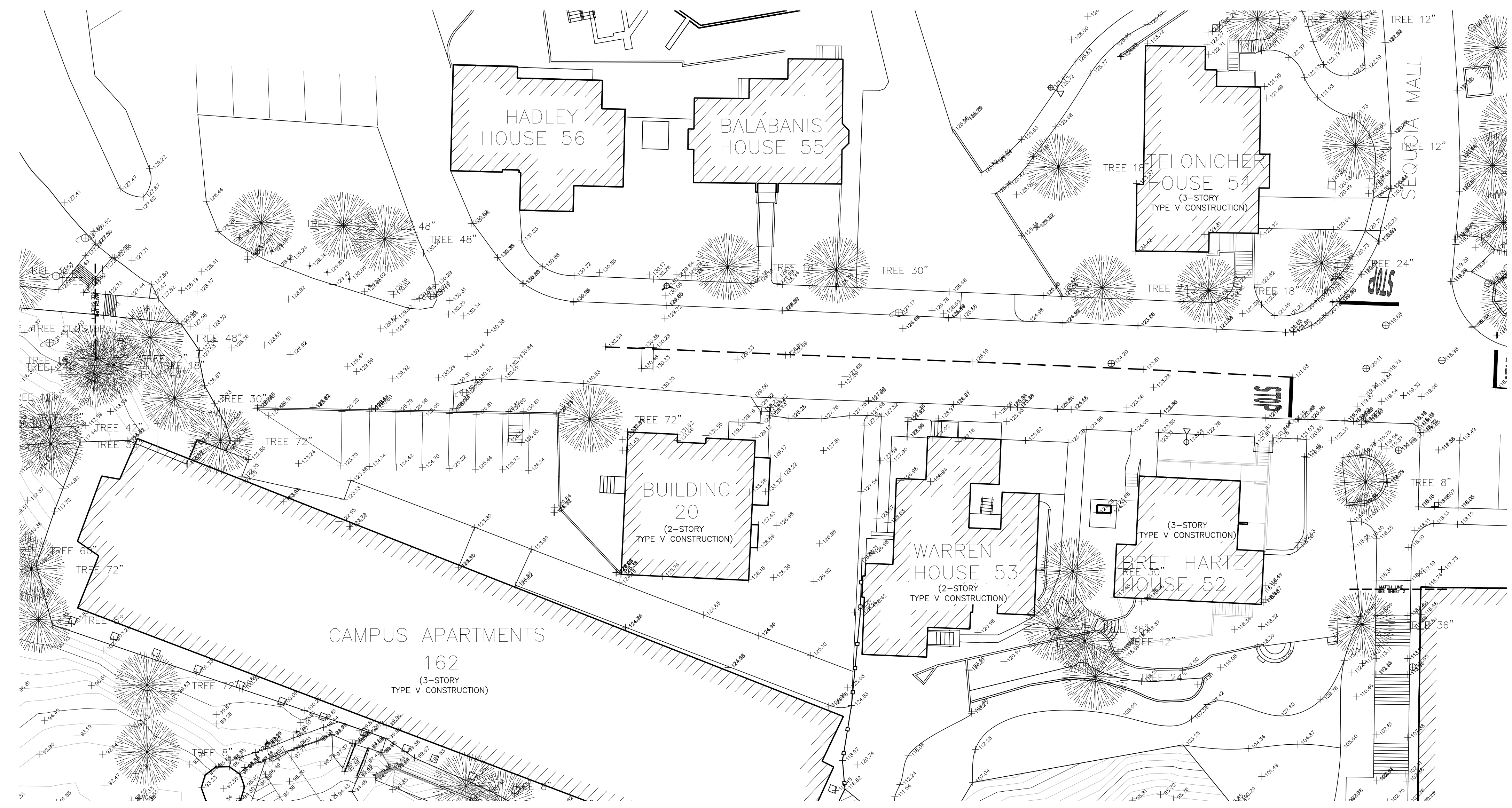


TOPO

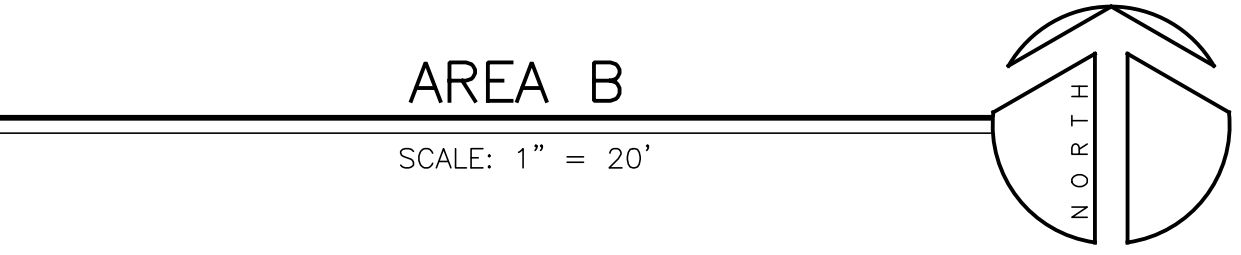
THESE PLANS ARE ORIGINALLY
PRINTED ON 22"x34" PAPER.
1 INCH

This drawing or drawing set shall not be used for construction unless a jurisdictional stamp (County, City, State, Federal) has been issued on the drawing, stating "FOR PERMIT" or similar verbiage, a wet signed professional engineer's stamp, and permit documents have been issued for the project.

REVISIONS	BY

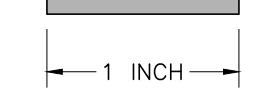


- NOTES:
1. INFORMATION SHOWN HEREON IS FROM DYLAN KOLSTAD LS 8152, BASED ON FIELD SURVEY JUNE 14-15, 2023, AND WHITCHURCH ENGINEERING INC BASED ON FIELD SURVEY 5/31 - 6/16 2023.
 2. SCOPE OF WORK IS LIMITED TO WESTERLY PROPERTY BOUNDARY OF HUMBOLDT STATE UNIVERSITY / CALIFORNIA STATE POLYTECHNIC UNIVERSITY, HUMBOLDT NEAR ASSESSOR'S PARCEL NUMBER 020-063-007, AND LOCATION OF EASEMENT(S) ALONG LK WOOD BLVD. IN THIS VICINITY. NO TITLE REPORT NOR SPECIFIC DEEDS RELATIVE TO THIS AREA WAS PROVIDED TO THE SURVEYOR. PROPERTY BOUNDARY SHOWN IS THE EAST RIGHT OF WAY LINE OF HIGHWAY 101, FROM MEASUREMENTS TO SURVEY FOR HUMBOLDT STATE UNIVERSITY, FILED IN BOOK 58 OF SURVEYS, PAGES 28-29. MAPPING FROM CALTRANS RELATIVE TO FORMER HIGHWAY POSSESSION OF LK WOOD HAS BEEN REQUESTED AND IS FORTHCOMING.
 3. HORIZONTAL COORDINATES PROVIDED HEREON ARE CALIFORNIA COORDINATE SYSTEM NAD 83 (2011) ZONE 1, EPOCH 2010.0, BASED ON MEASUREMENTS TO NGS PID "DH6345". DIVIDE COORDINATES AND DISTANCES SHOWN BY 0.99989830 TO ACHIEVE GROUND DISTANCES. ELEVATIONS ON FIELD POINTS SHOWN HEREON ARE ON NAVD'88 DATUM, HOLDING ELEVATION 10.50 FEET ON THIS CONTROL POINT.
 4. UTILITIES ARE SHOWN ARE BASED ON USA MARKINGS, EXISTING UTILITY MAPS AND VISUAL OBSERVATIONS.



TOPO

THESE PLANS ARE ORIGINALLY PRINTED ON 22"x34" PAPER.



This drawing or drawing set shall not be used for construction unless a jurisdictional stamp (County, City, State, Federal) has been issued on the drawing, stating "FOR PERMIT" or similar verbiage, a wet signed professional engineer's stamp, and permit documents have been issued for the project.

WHITCHURCH ENGINEERING, INC.
610 9th Street Fortuna, California 95540
Phone (707) 725-6926

CAL POLY HUMBOLDT SURVEY
APN: 020-063-007
AREA B
For: FRED SALDANA fred.saldana@humboldt.edu

Date	JULY 17, '23
Scale	AS NOTED
Design	MJB
Drawn	MJB
Job	CPY2301
Sheet	6

C:\Users\jhumblin\OneDrive\Documents\CPY2301\Map\CPY2301 - Topo.dwg 7/19/2023